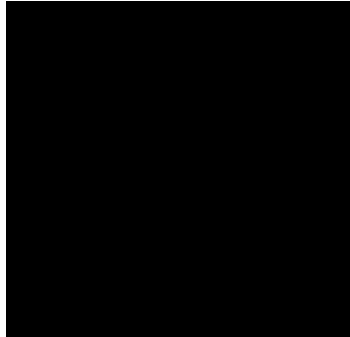


TROY UNIVERSITY

ANNUAL FACT BOOK 2006



A Planning and Information Document

Compiled by the
Institutional Research, Planning, and Effectiveness (IRPE) Office
Troy University
Troy, Alabama 36082
(334) 670-3314
<http://www.troy.edu/irpe/index.html>

Dr. Angela Roling, Associate Vice-Chancellor

TABLE OF CONTENTS

PREFACE	x
Troy University Mission with Institutional Goals	xi
Historical Highlights	xii
Definitions	xiii
Troy University Quick Facts Fall Semester 2005	xiv
ACHE Tuition and Fee Schedule 2005-2006	xv
UNIVERSITY ORGANIZATION AND ADMINISTRATION	
Organization and Administration	2
Board of Trustees	3
<i><u>Troy University Organizations</u></i>	
• Troy University Organization Chart	4
• Executive Vice Chancellor and Provost Organization Chart	5
• Administration Organization Chart	Administration Orga

University College Applications Received, Accepted, and Enrolled Fall 2001 through Fall 2005	208
University College Degrees Conferred by Academic Program Academic Year 2004-2005	209
University College Degrees Conferred by College 2000-01 through 2004-2005	210
University College Degrees Conferred by Gender and Ethnicity Academic Year 2004-2005	211
University College Summary of Full-Time Salaries by Rank and Gender Fall 2005	212
University College Employee Analysis Fall 2005	213
Troy University University College Unrestricted and Restricted Current Funds Revenues by Source For the Years Ended September 20, 1999-2005	214
Troy University University College Unrestricted and Restricted Current Funds Expenditures by Function For the Years Ended September 20, 1999-2005	214
Troy University University College Unrestricted and Restricted Current Funds Expenditures As a Percentage of Totals For the Years Ended September 20, 1999-2005	215
Troy University University College Unrestricted and Restricted Current Funds Expenditures per FTE Student For the Years Ended September 20, 1999-2005	215
University College Financial Aid Annual Report	216
DOTHAN CAMPUS APPENDIX	
Dothan Campus Quick Facts Fall Semester 2005	218
ACHE Tuition and Fee Schedule 2005-2006	220
Dothan Campus Summary of Headcount Enrollment Fall 2001-Fall 2005	

Troy University Montgomery Campus Unrestricted and Restricted Current Funds Expenditures As a Percentage of Totals For the Years Ended September 20, 1999-2005	277
Troy University Montgomery Campus Unrestricted and Restricted Current Funds Expenditures per FTE Student For the Years Ended September 20, 1999-2005	278
Montgomery Campus Financial Aid Annual Report	279
Troy University User's Comment Form	280

Troy University is accredited by the Commission on Colleges of the Southern Association of Colleges and Schools to award the associate degree, the bachelor's degree, the master's degree, and the education specialist degree.

Troy University does not discriminate on the basis of sex, age, color, race, national origin, religion, handicap veteran status or sexual orientation in its admissions, education, employment, or access to its programs. The university fully complies with the following: Civil Right Act of 1964 and its amendments; Federal Executive Order 11246; Educational Amendments of 1972 and 1974; the Vietnam Era Veterans Readjustment Assistance Act of 1972; Age Discrimination Act of 1975; Family Educational Rights and Privacy Act of 1974; and the Uniformed Services Employment and Reemployment Rights Act of 1994.

PREFACE

The *Troy University Fact Book 2006* is the first Fact Book, which includes data from the three merged campuses, Dothan, Montgomery, and Troy. The Fact Book is intended to be a reference with quantifiable data about students, faculty, staff, and financial and physical resources. It serves as a source of facts about Troy University and is used by administrators, faculty, staff, alumni, and others who may need information.

This edition of the Fact Book contains Troy University Quick Facts Fall 2005, a summary of information about Troy University including Dothan and Montgomery, Fast Facts Fall 2005 Student Services, a summary of Student Services information for the Troy Campus and, a summary of the CIRP Freshmen Survey conducted in 2005 on the Troy Campus.

The efforts of numerous individuals throughout the University are reflected in the *2006 Fact Book*, including, but not limited to, Academic Division; Administration Division; Student Services Division; Institutional Advancement and External Relations Division; Institutional Research, Planning, & Effectiveness; and Chancellor's office.

A collection of tables and graphics such as this must be a relevant, functional tool; your suggestions for improving subsequent editions are welcome on the Troy University User's Comment Form at the back of this document.

HISTORICAL HIGHLIGHTS

Troy University traces its origin to the Troy State Normal School which was established on 26 February 1887, by an Act of the Alabama Legislature. Recognizing the growth of the School's programs, the State Board of Education in 1929 changed the name of the School to State Teachers College, and in 1931, the College granted its first baccalaureate degree.

Continued growth in the College's programs prompted the Alabama legislature in 1957 to change the name to Troy State College, and in the same year, the State Board of Education authorized the master's degree program. On 14 December 1967, Troy State College was officially renamed Troy State University.

Responding to the needs of the people of the area, Troy State University established a center at Fort Rucker in 1961, and another center in Montgomery at Maxwell-Gunter Air Force Base in 1965. These centers became degree-granting branches of Troy State University in 1966. TSU at Montgomery in 1983 and TSU at Dothan in 1985 were accredited by the Commission on Colleges of the Southern Association of

DEFINITIONS

Alumni	Includes Troy Campus, Phenix City Campus, Dothan Campus, Montgomery Campus, and University College sites.
Dothan Campus	Includes all activities conducted on the campus in Dothan, Alabama. The academic areas include College of Arts and Sciences, the Sorrell College of Business, College of Education, and Graduate School master's degree programs offered on the Dothan Campus.
Headcount	An unduplicated count of the total number of students, including full-time and part-time students.
Montgomery Campus	Includes all activities conducted on the campus in Montgomery, Alabama. The academic areas include College of Arts and Sciences, the Sorrell College of Business, College of Education, and Graduate School master's degree programs offered on the Montgomery Campus.
Phenix City Campus	Includes all activities conducted on the campus in Phenix City, Alabama. The academic areas include the Sorrell College of Business, College of Education, College of Health & Human Services and Graduate School master's degree programs offered on the Phenix City Campus.
State Sites	Includes all activities conducted on the Troy Campus; the Phenix City Campus; Nursing in Montgomery and Phenix City; the Dothan Campus; and the Montgomery Campus.
Troy Campus	Includes all activities conducted on the campus in Troy, Alabama. The academic areas include College of Arts and Sciences, the Sorrell College of Business, and College of Communication and Fine Arts, the College of Education, the College of Health and Human Services, and Graduate School master's degree programs offered on the Troy Campus.
University College	Includes all out-of-state activities of Troy University.

**Troy University
Quick Facts
Fall Semester 2005**

Student Enrollment

1. Headcount, Course, FTE Student Enrollment

	Headcount	Course	SACS FTE	ACHE FTE
Total	27,104	88,966	21,644	16,863

2. Full-time/Part-time Headcount

Full-time Undergraduates			Part-time Undergraduates			Full-time Graduates			Part-time Graduates			Total	
Total	11,209	41%	Total	7,530	28%	Total	4,033	15%	Total	4,332	16%	27,104	100%

3. Headcount by Classification

	Freshman	Sophomore	Junior	Senior	Unclassified/Other	Graduate	Total
Total	5,772	3,185	3,267	6,294	221	8,365	27,104

4. Headcount by Gender

	Male	Female	Total
Total	11,357	15,747	27,104

5. Headcount by Ethnicity

	Non-Resident Alien	African American	American Indian	Asian	Hispanic	Caucasian	Ethnicity Unknown	Total
Total	627	10,401	136	384	901	13,566	1,089	27,104

University Graduates

6. Degrees Conferred - 2004-2005

	Associate's	Bachelor's	Master's	Education Specialist	Total
Troy & Nursing	47	697	574	1	1,319
Phenix City	0	153	239	127	519
Dothan	24	254	106	10	394
Montgomery	114	281	291	3	699
University College	297	597	1,918	0	2,812
Total					

ALABAMA COMMISSION ON HIGHER EDUCATION

TUITION AND FEE SCHEDULE 2005-2006

	PER TERM	RESIDENT CHARGE		Annual Amount	NON-RESIDENT CHARGE		Annual Amount
		PER CR HR	(\$MAXIMUM?)		PER TERM	PER CR HR (\$MAXIMUM?)	
<u>UNDERGRADUATE</u>							
TUITION 1	\$2,002.00	170.00		4,004.00	4,004.00	340.00	8,008.00
REQUIRED FEES 2	\$50.00			100.00	50.00		100.00
ROOM & BOARD 3	\$2,406.00 (+ tax)			4,812.00 (+ tax)	2,406.00 (+ tax)		4,812.00 (+ tax)
<u>GRADUATE</u>							
TUITION 1	\$2,184.00	182.00		4,368.00	4,368.00	364.00	8,736.00
REQUIRED FEES 2	\$50.00			100.00	50.00		100.00
ROOM & BOARD 3	\$2,406.00 (+ tax)			4,812.00 (+ tax)	2,406.00 (+ tax)		4,812.00 (+ tax)

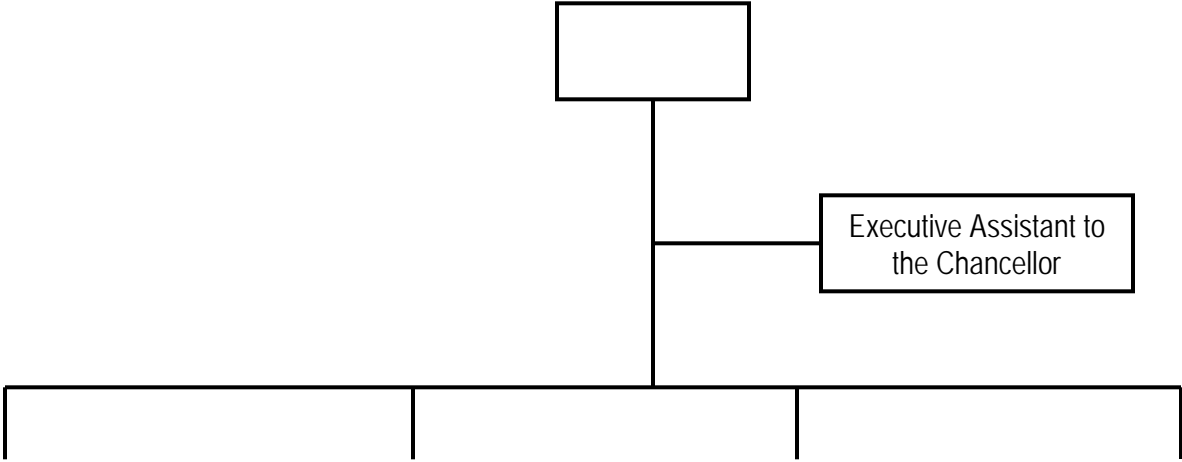
- 2) Please itemize required fees on a separate sheet and attach.
- 3) Combined 7 day Room & Board rate.

**UNIVERSITY
ORGANIZATION
AND
ADMINISTRATION**

The Chancellor is the chief executive officer of Troy University. The Chancellor is assisted by a Cabinet which includes the Senior Executive Vice Chancellor and Provost, the Senior Vice Chancellor for Administration, the Senior Vice Chancellor for Student Services, the Senior Vice Chancellor for Advancement and External Relations, the Senior Vice Chancellor for the College of Health and Human Services, the Senior Vice Chancellor for the College of Education, the Senior Vice Chancellor for the College of Arts and Sciences, the Senior Vice Chancellor for the College of Business, the Senior Vice Chancellor for the College of Communication and Fine Arts, the Senior Vice Chancellor for the Graduate School, and the Senior Vice Chancellor for the University College. The Dean of each College, the Vice Chancellor for University College, the Vice Chancellor for Phenix City, and the Registrar report to the Executive Vice Chancellor and Provost who is assisted by the Associate Provost and Graduate Dean and the Associate Provost for Undergraduate Studies.

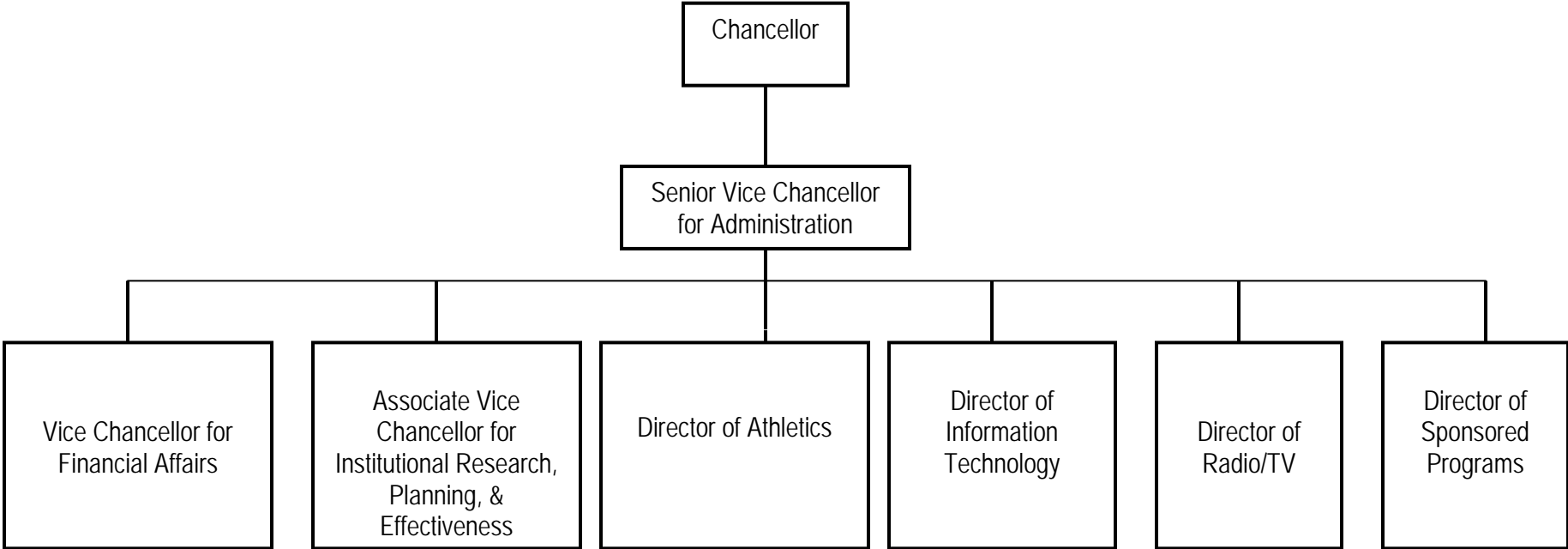
The Academic Affairs Division is organized into the College of Arts and Sciences, the Sorrell College of Business, the College of Communication and Fine Arts, the College of Education, the College of Health and Human Services, the Graduate School, and University College. The Dean of each College, the Vice Chancellor for University College, the Vice Chancellor for Phenix City, and the Registrar report to the Executive Vice Chancellor and Provost who is assisted by the Associate Provost and Graduate Dean and the Associate Provost for Undergraduate Studies.

TROY UNIVERSITY
Organization Chart



TROY UNIVERSITY
Organization Chart
Executive Vice Chancellor and Provost

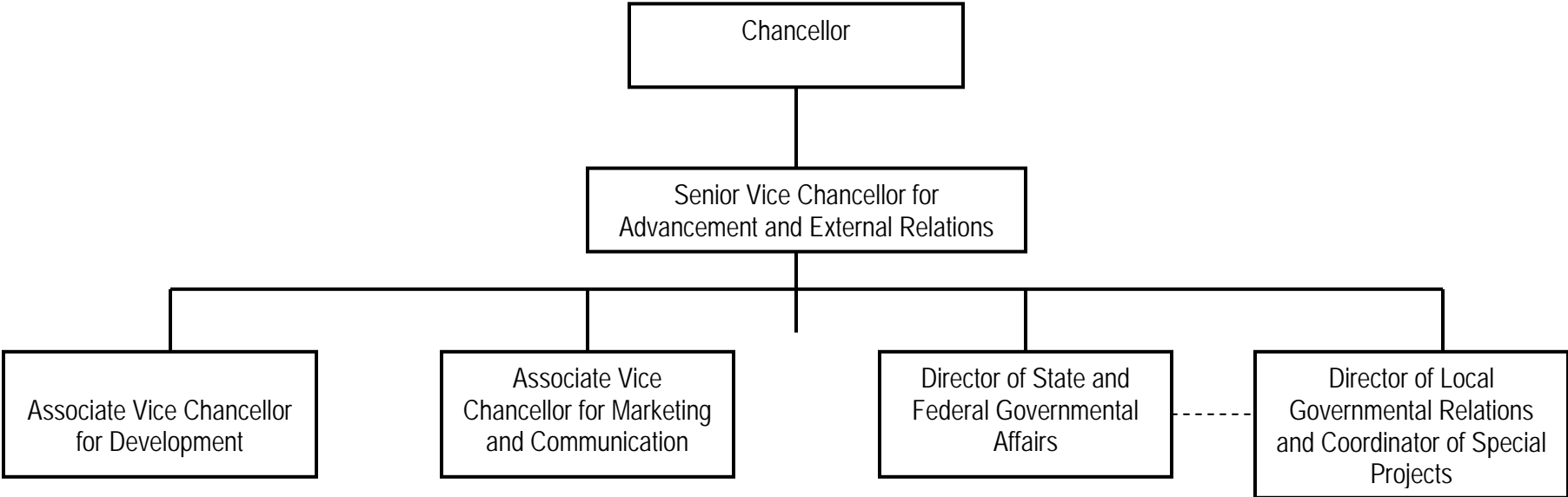
TROY UNIVERSITY
Organization Chart
Administration



Senior Vice Chancellor
Student Services

Dean

TROY UNIVERSITY
Organization Chart
Advancement and External Relations



TROY UNIVERSITY
University College
Organization Chart



STUDENT ENROLLMENT

Primary Campus (Home Location)	Secondary Campus (Course Location)								Total Duplicated Headcount by Home Location
	Troy (T01)	Locheed Martin (TCP)	Troy Distance Learning (TDL)	Montgomery Nursing (T04&T08)	Phenix City (T02)	Dothan (D01)	Montgomery (M01)	University College	
Troy (T01)	5,226	4	34	18	35	102	84	320	5,823
EMBA-Bank Management (T15)	0	0	0	0	0	0	1	0	1
Locheed Martin (TCP)	0	11	0	0	0	0	0	0	11
Troy Distance Learning (TDL)	3	0	1,148	0	0	2	3	51	1,207
ASN/BSN Montgomery Nursing (T04)	5	0	1	297	1	4	171	135	614
Montgomery MSN Graduate Nursing (T08)	0	0	0	72	2	0	0	0	74
Phenix City (T02)	9	0	0	0	1,705	3	20		

Troy University

**Troy University
Course Enrollments
Fall Semester 2005**

Primary Campus (Home Location)	Secondary Campus (Course Location)				Course Enrollments by Location
	Troy (T01)	Locheed Martin (TCP)	Troy Distance Learning (TDL)	Montgomery Nursing	
					,138
					1
					19
					09
					51
					157
					93
					04
					,891
					,003
					,966

**Troy University
Headcount Enrollment
By Classification and Enrollment Status
Fall 2005**

Classification	Full-Time	Percent	Part-Time	Percent	Total
Fall 2005					
Freshmen	2,959	54.6%	2,461	45.4%	5,420
Sophomore	1,937	58.9%	1,354	41.1%	3,291
Junior	2,014	61.2%	1,279	38.8%	3,293
Senior	3,641	63.4%	2,105	36.6%	5,746
Unclassified	657	66.6%	329	30I3nTc4 196n.518 0 Td(36) 946	

ate

%

age

Troy University

Headcount Enrollment by College and Academic Level

Fall 2005

College/Academic Level	Fall 2005	
	#	%
<u>Arts & Sciences</u>		
Undergraduate	7,164	38.23%
Graduate	1,495	17.87%
Total	8,659	31.95%
<u>Business</u>		
Undergraduate	5,398	28.81%
Graduate	2,830	33.83%
Total	8,228	30.36%
<u>Communication & Fine Arts</u>		
Undergraduate	494	2.64%
Graduate	3	0.04%
Total	497	1.83%
<u>Education</u>		
Undergraduate	2,378	12.69%
Graduate	3,655	43.69%
Total	6,033	22.26%
<u>Health & Human Services</u>		
Undergraduate	1,257	6.71%
Graduate	148	1.77%
Total	1,405	5.18%
<u>Unclassified</u>		

**Troy University
Headcount Enrollment
By Major & Academic Level
Fall 2005**

Major	Fall 2005	
	Undergraduate	Graduate
Accounting	670	0
Adult Education	0	18
Agency Counseling	0	55
American English Group	33	0
Applied Computer Science	150	0
Art	77	0
Art Education	10	0
Athletic Training	66	0
Biology	341	0
Biology Education	10	5
Broadcast Journalism	136	0
Certification	0	30
Chemistry	42	0
Chemistry Education	1	0
Childhood Studies	1	0
Collaborative Teacher Education	84	12
Communication Arts - Drama	48	0
Communication Arts - Speech	11	0
Community Psychology	0	351
Counseling Psychology	0	448
Computer Science	885	24
Criminal Justice	1,937	245
Design, Technology & Industry	69	0
Early Childhood Education	46	16
Educational Administration	0	46
Educational Leadership	0	153
Elementary Education	641	522
EMBA - General Management	0	84
EMBA - Information Systems	0	13
EMBA - Healthcare Management	0	2
English	110	0
English Education	1	7
Environmental Analysis & Management	0	24
Environmental Science	33	0
Finance	203	0
Foundations of Education	0	1
French	1	0
General Business	1,340	0
General Education	2,673	0
General Education Administration	0	2
Geomatics	40	0

Gifted Education	0	7
Health & Physical Education - Comprehensive	48	0
History	97	0
History Education	47	8
Human Resources Management	81	580
Human Services	137	0
Information Systems	270	0
International Business	33	0
International Relations	0	580
Journalism	129	0
Language Arts Education	49	11
Management	1,361	1,314
Marine Biology	7	0
Marketing	301	0
Master of Education	0	1,205
Master of Teaching	0	15
Math Education	77	10
Mathematics	97	0
MBA	0	696
MBA-Accounting	0	90
MBA-Information Systems	0	51
Music Conducting	0	3
Music - General	24	0
Music Education - Instrumental	95	6
Music Education - Vocal	10	0
Nursing	781	108
Personnel Counseling	0	22
Physical Education	22	5
Physical Science	3	0
Political Science	244	0
Post Secondary Education	0	432
Pre-Engineering	11	0
Professional Studies	99	0
Psychology	1,168	0
Public Administration	0	622
Reading Specialist	0	10
Rehabilitation	31	0
Rehabilitation Counseling	0	37
Resources & Technology Management	148	0
Resources Management	936	0
Risk Management & Insurance	31	0
School Counseling	0	118
School Psychology	0	20
School Psychometry	0	3
Science Education	20	4
Social Science	329	0
Social Science Education	48	6
Social Services Counseling	0	70
Social Work	96	0
Sociology	32	0
Sport & Fitness Management	146	40
Technology Management	24	0
Unclassified/Other	2,048	234

STUDENT DEMOGRAPHICS

**TROY UNIVERSITY
 APPLICATIONS RECEIVED, ACCEPTED, AND ENROLLED
 FALL 2005**

	Male	Female	TOTAL
RECEIVED			
Freshmen	2,297	2,461	4,758
Transfers	2,432	2,967	5,399
First-Time Graduates	1,123	1,913	3,036
TOTAL	5,852	7,341	13,193
ACCEPTED			
Freshmen	1,771	2,095	3,866
Transfers			

Troy University
 Permanent Residence By Alabama Counties
 Fall 2005

Autauga	507	Coosa	11	Jefferson	288	Pike	1,202
Baldwin	205	Covington	241	Lamar	3	Randolph	17
Barbour	183	Crenshaw	203	Lauderdale	14	Russell	493
Bibb	5	Cullman	20	Lawrence	4	St. Clair	14
Blount	10	Dale	602	Lee	530	Shelby	165
Bullock	55	Dallas	101	Limestone	10	Sumter	2
Butler	119	Dekalb	12	Lowndes	73	Talladega	26
Calhoun	21	Elmore	710	Macon	79	Tallapoosa	56
Chambers	142	Escambia	64	Madison	91	Tuscaloosa	42
Cherokee	2	Etowah	7	Marengo	14	Walker	17
Chilton	60	Fayette	2	Marion	5	Washington	7
Choctaw	2	Franklin	1	Marshall	14	Wilcox	14
Clarke	35	Geneva	195	Mobile	217	Winston	2
Clay	6	Greene	1	Monroe	48	Unknown	14
Cleburne	4	Hale	3	Montgomery	3111		
Coffee	515	Henry	198	Morgan	14		
Colbert	4	Houston	1086	Perry	4		
Conecuh	39	Jackson	5	Pickens	2	TOTAL	11,968

Alabama	11,968	Nebraska	17
Alaska	63	Nevada	8
Arizona	90	New Hampshire	8
Arkansas	20	New Jersey	34
California	150	New Mexico	96
Colorado	241	New York	283
Connecticut	9	North Carolina	617
Delaware	7	North Dakota	5
District of Columbia	10	Ohio	58
Florida	2,550	Oklahoma	95
Georgia	5,718	Oregon	10
Guam	8	Pennsylvania	41
Hawaii	105	Puerto Rico	4
Idaho	6	Rhode Island	1
Illinois	50	South Carolina	380
Indiana	30	South Dakota	1
Iowa	10	Tennessee	201
Kansas	57	Texas	443
Kentucky	227	Utah	10

**Troy University
Headcount Enrollment
By Foreign Countries
Fall 2005**

Aruba	1	Pakistan	6
Australia	5	Poland	2
Azerbaijan	1	Romania	2
Bahamas	1	Russia	2
Belize	1	Saudi Arabia	14
Bosnia - Herzegovina	1	South Korea	54
Cameroon	1	Spain	2
Canada	10	Sri Lanka	1
Chile	1	Sweden	1
China	227	Taiwan	3
Croatia	1	Togo	1
Democratic Republic of Congo	2	Turkey	21
England	2	Turkmenistan	1
Egypt	2	Ukraine	1
France	2	Uzbekistan	4
Germany	5	Venezuela	3
Ghana	4	Vietnam	2
Guatemala	1	Zimbabwe	4
Hong Kong	1	Unknown	1
India	51		
Indonesia	3		
Ireland	2		
Japan	55		
Kazakhstan	1		
Kenya	25		
Malaysia	1		
Mongolia	1		
Morocco	4		
Nepal			

TROY UNIVERSITY
GRADUATION RATES
STUDENT BODY AND STUDENT ATHLETES
FRESHMEN ENTERING FALL 1999

**Troy University
Degrees Conferred by Campus
2004-2005***

Year & College	Associate	Bachelor's	Master's	Educational Specialist	Total
2004-2005					
Troy	47	891	574	1	1,513
Phenix City	0	166	630	6	1,203

Troy University

Degrees Conferred by Gender and Ethnicity

Academic Year 2004-2005*

Ethnicity	<u>Associate</u>		<u>Bachelor's</u>		<u>Master's</u>		<u>Educational Specialist</u>		<u>Total</u>	
	Male	Female	Male	Female	Male	Female	Male	Female	Male	Female
Non-Resident Alien	0	0	25	36	18	19	0	0	43	55
African American	62	117	179	385	302	923	6	57	549	1,482
American Indian	0	0	8	6	7	7	0	0	15	13
Asian/Pacific Islander	0	5	6	15	25	24	0	0	31	44
Hispanic	16	4	29	17	37	32	0	0	82	53
Caucasian	116	112	698	806	598	973	12	64	1,424	1,955
Unknown	14	8	22	28	81	75	0	2	117	113
Total	208	246	967	1,293	1,068	2,053	18	123	2,261	3,715

* Note: The degrees reported were awarded between July 1, 2004 and June 30, 2005.

Troy University
Degrees Conferred by Academic Program
Academic Year 2004-2005*

CIP Code	Academic Program	Associate	Bachelor's	Master's	Educational Specialist	Total
03.0104	Environmental Science	0	5	0	0	5
09.0401	Journalism	0	25	0	0	25
09.0701	Radio and Television	0	20	0	0	20
	Computer and Information Sciences,					
11.0101	General	1	168	5	0	174
13.0101	Education, General	0	0	6	0	6
13.0401	Educational Leadership and Administration,					
	General	0	0	33	24	57
13.0499	Educational Administration and Supervision,					
	Other	0	0	15	10	25
13.0901	Social and Philosophical Foundations of					
	Education	0	0	855	0	855
13.1101	Counselor Education/School Counseling					
	and Guidances Services	0	0	11	13	24
13.1201	Adult and Continuing Education and					
	Teaching	0	0	8	0	8
13.1202	Elementary Education and Teaching	0	122	182	93	397
13.1205	Secondary Education and Teaching	0	52	21	0	73
13.1206	Teacher Education, Multiple Levels	0	23	13	1	37
13.1210	Early Childhood Education and Teaching	0	4	6	0	10
15.1102	Surveying Technology/Surveying	0	5	0	0	5
23.0101	English Language and Literature, General	0	29	0	0	29
23.1001	Speech and Rhetorical Studies	0	8	0	0	8
	Liberal Arts and Sciences, General Studies					
24.0199	and Humanities, Other	377	29	0	0	406
26.0101	Biology/Biological Sciences, General	0	44	0	0	44
27.0101	Mathematics, General	0	15	0	0	15
30.9999	Multi/Interdisciplinary Studies, Other	0	0	10	0	10
	Sport and Fitness					
31.0504	Administration/Management	0	28	6	0	34
40.0501	Chemistry, General	0	5	0	0	5
42.0101	Psychology, General	0	205	0	0	205
42.0401	Community Psychology	0	0	40	0	40
42.0601	Counseling Psychologist					

Troy University
Degrees Conferred by College
2004-2005*

Year & College	Associate	Bachelor's	Master's	Educational Specialist	Total
2004-2005					
Arts & Sciences	378	631	483	0	1,492
Business	29	977	23	0	1,029
Communication & Fine Arts	0	83	1,174	0	1,257
Education	0	406	1,405	141	1,952
Health & Human Services	47	163	36	0	246

3.2208 624du22.428.526256128.5262428.52H27(6145428.52)r-8.696(21408.52)2.46H27(52516.28.52)8626 84522.j(2.J) d 52614238(91085057519028262

TROY UNIVERSITY SYSTEM
AS OF MARCH 2006

<i>STATE</i>	<i>ALUMNI</i>	<i>STATE</i>	<i>ALUMNI</i>	<i>STATE</i>	<i>ALUMNI</i>
Alabama	28,466	Louisiana	537	Oregon	71
Alaska	80	Maine	52	Pennsylvania	418
Arizona	364	Maryland	553	Puerto Rico	66
Arkansas	162	Massachusetts	140	Rhode Island	35
California	936	Michigan	285	South Carolina	925
Colorado	395	Minnesota	117	South Dakota	24
Connecticut	67	Mississippi	438		

Source: Office of Alumni Affairs – Alumni Affairs Database

Troy University
ALUMNI
BY ALABAMA COUNTIES
AS OF MARCH 2006

Autauga	982	Coosa	42	Jefferson	682	Pike	2,210
Baldwin	983	Covington	1,078	Lamar	4	Randolph	46
Barbour	660	Crenshaw	598	Lauderdale	39	Russell	1,015
Bibb	25	Cullman	48	Lawrence	10	St. Clair	40
Blount	20	Dale	1,254	Lee	1,231	Shelby	443
Bullock	148	Dallas	278	Limestone	15	Sumter	9
Butler	373	Dekalb	16	Lowndes	131	Talladega	94
Calhoun	86	Elmore	1,529	Macon	162	Tallapoosa	96
Chambers	418	Escambia	356	Madison	238	Tuscaloosa	150
Cherokee	4	Etowah	36	Marengo	42	Walker	23
Chilton	181	Fayette	6	Marion	8	Washington	36
Choctaw	17	Franklin	12	Marshall	47	Wilcox	87
Clarke	129	Geneva	829	Mobile	692	Winston	12
Clay	10	Greene	11	Monroe	285		
Cleburne	1	Hale	16	Montgomery	4,693		
Coffee	1,887	Henry	538	Morgan	58		
Colbert	8	Houston	3,074	Perry	30		
Conecuh	148	Jackson	23	Pickens	14	TOTAL	28,466

Source: Office of Alumni Affairs

Alumni Affairs Data Base

**GEOGRAPHIC DISTRIBUTION OF ALUMNI
IN FOREIGN COUNTRIES
AS OF MARCH 2006**

Australia	6	Morocco	1
Austria	2	Netherlands	5
Bahamas	7	Nicaragua	1

UNIVERSITY PERSONNEL

Troy University
Summary of Full-Time Faculty Salaries by Rank and Gender
Fall 2005

RANK	9-10 Month				11-12 Month			
	Number		Average Salary		Number		Average Salary	
	Men	Women	Men	Women	Men	Women	Men	Women
Professor	28	10	\$67,369	\$61,397	25	9	\$82,868	\$87,033
Associate Professor	33	24	\$54,786	\$53,072	35	22	\$64,256	\$64,725
Assistant Professor	51	55	\$48,374	\$47,756	59	25	\$53,920	\$54,702
Instructor	4	12	\$45,943	\$38,340	2	4	\$44,723	\$43,656
Lecturer	8	9	\$34,615	\$31,273	13	11	\$39,090	\$36,610
Undesignated	1	2	\$78,624	\$45,747	1	0	\$106,290	\$0
Total	125	112	\$53,605	\$47,744	135	71	\$60,784	\$58,481

Source: Office of Institutional Research, Planning and Effectiveness

**Troy University
Employee Analysis
Fall 2005**

	Men		Women		Total	
	Full-Time	Part-Time	Full-Time	Part-Time	Full-Time	Part-Time
Executive/Administrative	68	1	49	2	117	3
Faculty	269	524	187	425	456	949
Other Professional	149	24	279	21	428	45
Graduate Assistants	0	20	0	27	0	47
Secretarial/Clerical	15	52	237	145	252	197
Technical	14	31	5	35	19	66
Skilled Craft	3	0	2	0	5	0
Service/Maintenance	26	89	8	48	34	137
Total	544	741	767	703	1,311	1,444

Source: Office of Institutional Research, Planning and Effectiveness

LIBRARY

STAFF	2003-2004	2004-2005
Librarians & Other Professional Staff	10.25	19.50
All Other Paid Staff (except student assistants)	8.25	19.80
Contributed Services Staff	0.00	0.00
Student Assistants From All Funding Sources	8.00	11.80
TOTAL FTE STAFF	26.50	51.10

CATEGORY	NUMBER 2003-2004	NUMBER 2004-2005
CIRCULATION TRANSACTIONS		
General Collections	36,606	49,722
Reserve Collections	4,067	4,484
INTERLIBRARY LOANS		
Provided to Other Libraries	2,066	2,619
Received From Other Libraries	1,322	1,897
INFORMATION RECEIVED FROM OTHER LIBRARIES		
Number of Presentations	91	152
Number of Persons Served in Presentations	2,476	3,763

CATEGORY	2003-2004	2004-2005
SALARIES & WAGES	\$625,749	\$1,106,725
COLLECTIONS		
Print Materials (excludes serial subscriptions & microforms)	\$182,449	\$301,328
Current Serial Subscriptions (includes all physical formats)	\$508,782	\$636,737
Microforms (excludes current serial subscriptions)	\$96,900	\$102,293
Machine Readable Materials	\$0	\$0
Audiovisual Materials	\$20,996	\$29,204
Other	\$0	\$67,390
PRESERVATION	\$15,000	\$15,414
FURNION797 Pe&\$620.00UIPIOAC90		

**Library Report
State Sites
Fiscal Year 2004-2005
(Page 2)**

CATEGORY	Total Number Added During Fiscal Year	Total Number Held at End of Fiscal Year
BOOKS, BOUND SERIALS & GOVERNMENT DOCUMENTS (includes bound periodicals and newspapers & excludes microforms)		
Number of Volumes	8,824	585,884
Number of Titles***	4,468	309,280
CURRENT SERIAL SUBSCRIPTIONS (includes periodicals, newspapers & governmental documents)		
Number of Titles***		1,845
MICROFORMS Titles Total Number of Physical Units (not titles) of all types of microforms		1,944,205
MANUSCRIPTS & ARCHIVES (in linear feet)		4,810.5
CARTOGRAPHIC MATERIALS, number of units	53	1,165
GRAPHIC MATERIALS, number of units	0	770
AUDIO MATERIALS, number of units	124	6,973
FILM & VIDEO MATERIALS	947	11,704
MACHINE READABLE MATERIALS, number of titles***	386	26,289
OTHER LIBRARY MATERIALS, number of titles***	0	6,905

Source: Troy University Library

STAFF
Librarians & Other Professional Staff

2003-2004
10.25

2004-2005
21.50

**Library Report
State Sites & Out-of-State
Fiscal Year 2004-2005
(Page 2)**

CATEGORY	Total Number Added During Fiscal Year	Total Number Held at End of Fiscal Year
BOOKS, BOUND SERIALS & GOVERNMENT DOCUMENTS (includes bound periodicals and newspapers & excludes microforms)		
Number of Volumes	8,827	585,887
Number of Titles***	4,468	309,280
CURRENT SERIAL SUBSCRIPTIONS (includes periodicals, newspapers & governmental documents)		
Number of Titles***		1,941
MICROFORMS Titles Total Number of Physical Units (not titles) of all types of microforms		1,946,809
MANUSCRIPTS & ARCHIVES (in linear feet)		48,105
CARTOGRAPHIC MATERIALS, number of units		1,165
GRAPHIC MATERIALS, number of units		770
AUDIO MATERIALS, number of units		7,027
FILM & VIDEO MATERIALS		12,157
MACHINE READABLE MATERIALS, number of titles***		26,289
OTHER LIBRARY MATERIALS, number of titles***		6,905

Source: Troy University Library

SUMMARY OF ENDOWMENT VALUES AND RETURNS

<i>For Year Ending:</i>		<i>Beginning</i>
-----------------------------	--	------------------

		Value	Deductions	Value	For year	For year	Return A	Return B	Return C	For Year
<i>t. 30,</i> <i>'96</i>	Cash	2,492,307.88	1,112,859.74	3,605,167.62	641,178.40	734,243.52	8.60%	9.14%	8.12%	50%
	Investments	12,562,200.01	767,081.46	13,329,281.47						

Sept. 30,

Source

2005

[Redacted]

[Redacted]

[Redacted]

[Redacted]

[Redacted]

[Redacted]

Troy University
Unrestricted and Restricted Current Funds Expenditures
As a Percentage of Totals
For the Year Ended September 30, 2005

Function	2005
Instruction	33.29%
Research	0.21%
Public Service	3.58%
Academic Support	5.39%
Athletics	3.43%
Libraries	1.68%
Student Services	3.24%
Institutional Support	17.53%
Op. & Maint. Of Plant	6.11%
Depreciation	2.26%
Scholarship	8.70%
Total Ed. & Gen. Expenses	85.42%
Interest Expense	1.10%
Transfers to Unexpended Plant	8.13%
Mandatory Transfers	0.00%
Nonmandatory Transfers	0.00%
Total Educational & General	94.65%
Auxiliary Enterprises (net)	5.35%
Mandatory Transfers	0.00%
Nonmandatory Transfers	0.00%
Total Expenditures & Transfers	100.00%

Source: Office of Accounting Services

*Note: Government Accounting Standards Board (GASB) requirements were implemented in FY 2002.

Function	2005
(FTE)	
Instruction	\$ 2,856
Research	

[Redacted]

[Redacted]

[Redacted]

ACADEMIC PROGRAMS

Council on Social Work Education (CSWE)
to award the bachelor's degree.

Association of Collegiate Business Schools and Programs (ACBSP)

3/15/2006

ALABAMA COMMISSION ON HIGHER EDUCATION

PROGRAM INVENTORY

Troy University

Current as of: March 3, 2006

OFFERED	STATUS	CIP	FIELD OF STUDY/PROGRAM TITLE	DEGREE
			COMPUTER SCIENCE (MTG)	M.S.
AL		13.0101	EDUCATION, GENERAL	M.S.
AL (TROY, DOTHAN, MTG)	Ed.S.		EDUCATION, GENERAL (MTG)	EDUCATION, GENERAL
	M.S.Ed.		13.0401	EDUCATIONAL LEADERSHIP AND ADMINISTRATION, GENERAL
	Ed.S.		EDUCATION ADMINISTRATION, GENERAL (TROY, DOTHAN)	EDUCATION ADMINISTRATION, GENERAL (TROY, DOTHAN)
SCHOOL COUNSELING AND GUIDANCE SERVICES	M.S.Ed.		13.1101	COUNSELOR EDUCATION/
	Ed.S.		SCHOOL COUNSELING (MTG)	SCHOOL COUNSELING (MTG)
			13.1201	ADULT AND CONTINUING EDUCATION AND TEACHING
			M.S.	ADULT EDUCATION (MTG)
			13.1202	ELEMENTARY EDUCATION AND TEACHING

26.0101	BIOLOGY/BIOLOGICAL SCIENCES, GENERAL				
	BIOLOGY (TROY, DOTHAN)			B.A./B.S.	
26.1302	MARINE BIOLOGY AND BIOLOGICAL OCEANOGRAPHY				
	MARINE BIOLOGY (TROY)				
	MATHEMATICS, GENERAL				27.0101
	MATHEMATICS (TROY, DOTHAN, MTG)			B.A./B.S.	
399	MULTI-/INTERDISCIPLINARY STUDIES, OTHER				30.99
	ENVIRONMENTAL & BIOLOGICAL SCIENCES (TROY)			M.S.	
33.0504	SPORT AND FITNESS ADMINISTRATION/MANAGEMENT				
	SPORT & FITNESS MANAGEMENT (TROY)			B.A./B.S.	
	SPORT & FITNESS MANAGEMENT (TROY)			M.S.	
40.0101	PHYSICAL SCIENCES				
	PHYSICAL SCIENCES (TROY, DOTHAN)				
40.0501	CHEMISTRY, GENERAL				
	CHEMISTRY (TROY)			B.A.	
	CHEMISTRY (TROY, DOTHAN)			B.S.	
42.0101	PSYCHOLOGY, GENERAL				
	PSYCHOLOGY (TROY, DOTHAN, MTG)			B.A./B.S.	
42.0401	COMMUNITY PSYCHOLOGY				
	COMMUNITY PSYCHOLOGY (TROY)			M.S.	
42.0801	COUNSELING PSYCHOLOGY				
	COUNSELING AND PSYCHOLOGY (TROY, DOTHAN, MTG)			M.S.	
43.0103	CRIMINAL JUSTICE/LAW ENFORCEMENT ADMINISTRATION				
	CRIMINAL JUSTICE ADMINISTRATION (TROY)			M.S.	
43.0104	CRIMINAL JUSTICE/SAFETY STUDIES				
	CRIMINAL JUSTICE (TROY, DOTHAN)			B.A./B.S.	

44.0401	PUBLIC ADMINISTRATION PUBLIC ADMINISTRATION (TROY)		M.P.A.
44.0101	SOCIAL WORK SOCIAL WORK (TROY)	B.A. / B.S.	SOCIAL WORK SOCIAL WORK
45.0101	HUMAN SERVICES SOCIAL SCIENCES, GENERAL SOCIAL SCIENCES (TROY, DOTHAN, MTG)	B.A. / B.S.	HUMAN SERVICES SOCIAL SCIENCES, GENERAL SOCIAL SCIENCES
45.0901	INTERNATIONAL RELATIONS AND AFFAIRS INTERNATIONAL RELATIONS (TROY, DOTHAN)		M.S.
45.1101	POLITICAL SCIENCE POLITICAL SCIENCE (TROY, MTG)	B.A. / B.S.	POLITICAL SCIENCE POLITICAL SCIENCE
45.1101	SOCIOLOGY SOCIOLOGY (DOTHAN)	B.A. / B.S.	SOCIOLOGY SOCIOLOGY
50.0701	ARTS STUDIES, GENERAL FINE ARTS (TROY)		B.A. / B.F.A.
50.0901	MUSIC, GENERAL MUSIC (TROY)		B.A. / B.S.
51.0913	ATHLETIC TRAINING/TRAINER ATHLETIC TRAINING EDUCATION (TROY)		B.S.
51.1601	NURSING - REGISTERED NURSE TRAINING NURSING (TROY) NURSING (TROY) NURSING (TROY)		A.S. B.S.N. M.S.N.
51.2399	REHABILITATION AND THERAPEUTIC PROFESSIONS, OTHER REHABILITATION (TROY)		B.A. / B.S.



Universi

lando, Flor a

AFB, Florida

P lori

AFB, Florida

Intern



\Rightarrow \dots
 \diamond \dots
 \bullet \dots
 \Rightarrow \dots
 \diamond \dots
 \bullet \dots
 \Rightarrow \dots
 \diamond \dots
 \bullet \dots

◇

▲

●

UNIVERSITY FACILITIES

121	Hillcrest House	14	0	0	0	4,700	0	4,700	0	0	0	4,575	0	4,575	1	1956	1995	100%	1
122	Little Trojan Learning Center	15	3,525	0	0	0	0	3,525	2,945	0	0	0	0	2,945	1	1954	1993	100%	2
122D (122)	Storage	15	336	0	0	0	0	336	308	0	0	0	0	308	1	1990	-	-	1
123	Honors Student Center	14	0	0	0	4,219	0	4,219	0	0	0	3,719	0	3,719	1	1989	-	-	1
124	Curtis Cottage	13	0	0	0	1,663	0	1,663	0	0	0	1,561	0	1,561	1	1956	-	-	1
125	Laundry	15	0	0	0	822	0	822	0	0	0	708	0	708	1	1969	-	-	1
127	Long Hall	1	7,292	0	0	0	0	7,292	6,558	0	0	0	0	6,558	1	1976	-	-	2
128	Malone Hall	1	25,805	0	0	0	0	25,805	22,962	0	0	0	0	22,962	1	1962	1985	100%	1
130	Softball Press Box	15	0	0	0	3,552	0	3,552	0	0	0	2,735	0	2,735	1	2001	-	-	1
131	Intramural Field House	15	0	0	0	1,595	0	1,595	0	0	0	1,303	0	1,303	1	1999	-	-	1
132	McCartha Hall	1	49,112	0	0	0	0	49,112	31,949	0	0	0	0	31,949	1	1950	1972	100%	1
133	Grounds Shop	10	1,950	0	0	3,050	0	5,000	1,750	0	0	2,980	0	4,729	1	2001	-	-	1
134	Natorium	6	0	0	0	17,842	0	17,842	0	0	0	16,573	0	16,573	1	1977	-	-	2
135	Tennis Pro Shop	10	0	0	0	1,152	0	1,152	0	0	0	1,023	0	1,023	1	2001	-	-	1
136	Pace Hall	14	0	0	0	44,589	0	44,589	0	0	0	41,264	0	41,264	1	1947	1998	100%	1
136M (136)	136 Catoma Street	1	14,310	0	0	0	11,900	26,210	13,645	0	0	0	10,605	24,250	1	1955	2000	90%	1
137	Physical Plant Administration	9	2,990	0	0	4,678	0	7,668	2,510	0	0	4,273	0	6,783	1	1984	-	-	1
138	Movie Gallery Veterans Stadium (Memorial Stadium)	15	0	0	0	90,658	0	90,658	0	0	0	79,933	0	79,933	1	1986	2003	100%	1
139	Recreational Gym	5	16,200	0	0	0	0	16,200	15,202	0	0	0	0	15,202	1	2003	-	-	1
140	Trojan Arena	5	0	0	0	58,810	0	58,810	0	0	0	57,133	0	57,133	1	1962	1999	100%	1
141	Smith Hall	1	68,655	0	0	0	0	68,655	53,233	0	0	0	0	53,233	1	1961	2004	100%	1
142	Sorrell Chapel	15	0	0	0	0	3,060	3,060	0	0	0	0	2,311	2,311	1	1983	-	-	1
143	Stewart Hall	15	0	0	0	23,358	0	23,358	0	0	0	19,870	0	19,870	1	1966	2001	100%	1
144	Time Off Cottage	13	0	0	0	0	0	0	0	0	0	0	0	0	1	1966	2001	100%	1

Heritage Hall	1	1,420	0	0	0	0	1,420	1,171	0	0	0	0	1,171	1	1947	-	-	1
Wendell Mitchell Hall	7	14,857	0	0	0	0	14,857	11,929	0	0	0	0	11,929	1	1929	1998	100%	1

220	Rosa Parks Children's Annex	15	0	0	0	0	10,842	10,842	0	0	0	0	9,200	9,200	1	1921	-	-	4
252	Rosa Parks Library & Musuem	4	46,474	0	0	5,526	0	52,000	32,339	0	0	4,330	0	36,669	1	2000	-	-	1
312	Executive Building	15	0	0	0	0	52,513	52,513	0	0	0	0	37,700	37,700	1	1923	1951	100%	4
340	TSU School of Nursing Building	1	19,272	0	0	0	0	19,272	13,446	0	0	0	0	13,446	1	2000	-	-	1
400	Adams Admin. Bldg.	1	22,796	0	0	0	0	22,796	19,377	0	0	0	0	19,377	1	1988	-	-	1
401	Higginbotham Hall	1	16,456	0	0	0	0	16,456	13,988	0	0	0	0	13,988	2	1993	-	-	1
402	Annex	1	5,606	0	0	1,520	0	7,126	4,765	0	0	1,292	0	6,057	1	1978	1986	100%	1
403	Maintenance and Storage	15	6,075	0	0	0	0	6,075	6,075	0	0	0	0	6,075	1	1965	2005	100%	1
405	New Academic Building	1	27,576	0	0	0	0	27,576	22,400	0	0	0	0	22,400	2	2000	-	-	1
500	Malone	1	33,416	0	0	403	0	33,819	32,419	0	0	360	0	32,779	2	1990	2004	16%	1
		2	3,96 -0.0063god[3]11(,)-e1(,)-5(962100(32,)(16,)6(456)- Td[E]9(x)-16(e)-3(c)-5s Td[E]9(x)>293(0)-3631(6,0)11(75)-3182(1)-2898(19653,80)-45205)-1895(16%)-3002(1)0016 Tc -29.944 -2.473 Td[40]11(2)TJ7.721 0 Td[M]-583 -110(

**Troy University Assessment Information
Internal Surveys & Hyperlinks**

The Institutional Research, Planning, and Effective (IRPE) Offices hav

7. Around half of the respondents earned \$40,000 or less each year and more than 20% made over \$60,000 in their annual salaries.
8. Over 85% of the respondents rated the following at Troy University as “Excellent” or “Good”, and these may be considered areas of strength for Troy University:
 - Class size (94.9%)
 - Academic/educational experiences (92.4%)
 - Quality of instruction (89.8%)
 - Professors (89.8%)
 - Courses (89.6%)
 - Grading procedures (88.1%)
 - Availability of classes (85.5%)
9. Approximately 75% of the respondents indicated that their education at Troy University had added “Very Much” or “Quite A Lot” to their knowledge, skills, or abilities in the following areas, and these may be considered adequate areas for Troy University:
 - Writing competency (78.3%)
 - Critical and creative thinking skills (75.2%)
 - Oral communication (73.5%)
 - Problem solving skills (73.3%)
10. Less than two-thirds of the respondents thought that education at Troy University had added “Very Much” or “Quite a Lot” to their knowledge, skills, or abilities in the areas listed below, and these are areas that may need improving:
 - Multi-media presentation skills (63.9%)
 - Understanding global cultural difference and diversity (63.5%)
 - Information technology (61.1%)
 - Ability to obtain employment in the major field (58.0%)
 - Scientific principles and methods (55.8%)
 - Mathematical skills and concepts (47.1%)
 - Understanding and appreciating the arts (46.1%)

Demographic and Other Information -- All Respondents

Q1. Graduation Year

		Frequency	Percent	Valid Percent	Cumulative Percent
Valid	1999	175	16.3	16.3	16.3
	2000	161	15.0	15.0	31.3
	2001	46	4.3	4.3	35.5
	2002	29	2.7	2.7	38.2
	2003	299	27.8	27.8	66.0
	2004	336	31.3	31.3	97.3
	2005	29	2.7	2.7	100.0
	Total	1075	100.0	100.0	

Q5. College

		Frequency	Percent	Valid Percent	Cumulative Percent
Valid	Arts & Science	227	21.1	21.1	21.1
	Business	396	36.8	36.8	58.0
	Education	328	30.5	30.5	88.5
	Comm & Fine Arts	25	2.3	2.3	90.8
	Health & Human Services	99	9.2	9.2	100.0
	Total	1075	100.0	100.0	

Q6. Degree

		Frequency			
Valid	Associate	25	2.3	2.3	2.3
	Bachelor's	370	34.4	34.4	36.7
	Master's	628	58.4	58.4	95.2
	Education Specialist	52	4.8	4.8	100.0
	Total	1075	100.0	100.0	

Q11. How well did TROY prepare you for additional study?

		Frequency	Percent	Valid Percent	Cumulative Percent
Valid	Excellent	133	12.4	45.4	45.4
	Good	132	12.3	45.1	90.4
	Fair	21	2.0	7.2	97.6
	Poor	1	.1	.3	98.0
	No preparation	6	.6	2.0	100.0
	Total	293	27.3	100.0	
	N/A	782	72.7		
Total		1075	100.0		

Q12. Current employment status

		Frequency	Percent	Valid Percent	Cumulative Percent
Valid	Employed full-time	949	88.3	88.3	88.3
	Employed part-time	40	3.7	3.7	92.0
	Unemployed	45	4.2	4.2	96.2
	Other	41	3.8	3.8	100.0
	Total	1075	100.0	100.0	

Q13. If employed, with what type of organization are you working? (Results are available upon request.)

Q14. Salary

		Frequency	Percent	Valid Percent	Cumulative Percent
Valid	<\$30,000	252	23.4	23.5	23.5
	\$30,000-40,000	259	24.1	24.1	47.6
	\$40,001-50,000	195	18.1	18.2	65.7
	\$50,001-60,000	138	12.8	12.8	78.6
	\$60,001-70,000	80	7.4	7.4	86.0
	>\$70,000	150	14.0	14.0	100.0
	Total	1074	99.9	100.0	
Missing	System	1	.1		
Total		1075	100.0		

Q15. How well did TROY prepare you for your employment?

Valid	Excellent	301	28.0	28.0	28.0
	Good	500	46.5	46.5	74.5
	Fair	126	11.7	11.7	86.2
	Poor	25	2.3	2.3	88.6
	Not applicable	123	11.4	11.4	100.0
	Total	1075	100.0	100.0	

Q 21. Would you be interested in joining the Troy University National Alumni Association?

Yes	443	41.2	41.2	41.2
No	632	58.8	58.8	100.0
	1075	100.0	100.0	

Q 25. Would you like to be contacted by the Alumni Office?

		Frequency	Percent	Valid Percent	Cumulative Percent
Valid	Yes	322	30.0	30.0	30.0
	No	753	70.0	70.0	100.0
	Total	1075	100.0	100.0	

Q26. If “Yes” in item 25, please provide your contact information. (This information is not published to preserve the anonymity of the survey.)

Q27. Provide any additional comments about TROY University. (This information is provided to key administrators but is not published otherwise.)

Appendix 1. Q17—Impact of TROY Education on Development of Knowledge, Abilities and Skills (Total)

Total respondents: 1,075

Knowledge, Abilities, and Skills	Very Much		Quite a lot		Some		Very little		Total
	N	%	N	%	N	%	N	%	
Ability to obtain employment in your field	379	35.3%	244	22.7%	245	22.8%	207	19.3%	1075
Ability to work with others	386	35.9%	369	34.3%	242	22.5%	78	7.3%	1075
Leadership skills	407	37.9%	365	34.0%	230	21.4%	73	6.8%	1075
Ability to adjust to new job demands and situations	372	34.6%	396	36.8%	221	20.6%	86	8.0%	1075
Global cultural differences and diversity	333	31.0%	349	32.5%	266	24.7%	127	11.8%	1075
Planning and project management	309	28.7%	429	39.9%	248	23.1%	89	8.3%	1075
Oral communication	366	34.0%	425	39.5%	214	19.9%	70	6.5%	1075
Writing competency	405	37.7%	436	40.6%	184	17.1%	50	4.7%	1075
Listening skills	352	32.7%	422	39.3%	221	20.6%	80	7.4%	1075
Multi-media presentation skills	307	28.6%	379	35.3%	263	24.5%	125	11.6%	1074
Problem solving skills	340	31.6%	448	41.7%	238	22.1%	49	4.6%	1075
Information technology	276	25.7%	381	35.4%	286	26.6%	132	12.3%	1075
Mathematical skills and concepts	183	17.0%	324	30.1%	335	31.2%	233	21.7%	1075
Understanding and appreciating the arts	203	18.9%	292	27.2%	290	27.0%	290	27.0%	1075
Scientific principles and methods	211	19.6%	389	36.2%	293	27.3%	182	16.9%	1075
Critical and creative thinking	376	35.0%	432	40.2%	220	20.5%	47	4.4%	1075

Appendix 11. Q18—Alumni Ratings on TROY Experiences (Total)

1,015

TROY Experiences	Excellent (4)		Good (3)		Fair (2)		Poor (1)		Total	AVG	SD
		%		%		%		%			
Academic/educational experiences	510	47.8%	476	44.6%	76	7.1%	6	0.6%	1068	3.40	0.645
Social experiences	330	33.4%	458	46.4%	171	17.3%	28	2.8%	988	3.10	0.782
Quality of instruction	445	41.6%	515	48.2%	101	9.4%	8	0.7%	1069	3.31	0.669
Availability of classes	446	41.9%	462	43.4%	132	12.4%	24	2.3%	1064	3.25	0.756
Courses	425	39.9%	520	49.7%	108	10.2%	2	0.2%	1064	3.29	0.650
Professors	488	45.7%	471	44.1%	95	8.9%	14	1.3%	1068	3.34	0.694
Class size	554	52.9%	440	42.0%	48	4.6%	5	0.5%	1047	3.47	0.608
Academic advising	360	34.4%	395	37.7%	223	21.3%	69	6.6%	1047	3.00	0.906
Grading procedures	402	37.7%	537	50.4%	114	10.7%	13	1.2%	1066	3.25	0.688
Library services	289	31.4%	405	44.0%	177	19.2%	50	5.4%	921	3.01	0.851
Computer services	265	29.5%	422	47.0%	172	19.2%	39	4.3%	898	3.02	0.813
Instructional support services	253	27.9%	440	48.5%	183	20.2%	32	3.5%	908	3.01	0.789
Career services	150	21.5%	269	38.6%	175	25.1%	103	14.8%	697	2.67	0.974
Counseling services	170	24.6%	258	37.3%	192	27.8%	71	10.3%	691	2.76	0.938
Recreational/intramural activities	112	27.7%	148	36.5%	86	21.2%	59	14.6%	405	2.77	1.011
Health services	87	25.6%	132	38.8%	80	23.5%	41	12.1%	340	2.78	0.963
Financial aid services	218	34.5%	248	39.2%	122	19.3%	44	7.0%	632	3.01	0.904
On-campus residence halls/apartments	60	27.6%	85	39.2%	47	21.7%	25	11.5%	217	2.83	0.964
Dining facilities	72	24.7%	117	40.1%	78	26.7%	25	8.6%	292	2.81	0.907
Business Office services	208	25.0%	368	44.3%	204	24.5%	51	6.1%	831	2.88	0.853

New Student Survey Report Fall 2005

Executive Summary

As an annual institutional effectiveness effort, the Office of Institutional Research, Planning, and Effectiveness (IRPE) conducted its first Troy University *New Student Survey* in Fall 2005. The purpose of the *Survey* was to identify the satisfaction of the Fall 2005 new students with their experiences at Troy University and to determine how well the University served their needs as new students.

The *Survey* was administered through an online survey program. The target population was the new students who enrolled at the University for the first time in Fall 2005. On October 14, 2005, the online survey was distributed via email to the first group of 5,936 students who enrolled during the first part of the Fall semester, and on December 9, the second group of 2,234 students who started in Term 2 and Session 2 of the Fall Semester were surveyed. After two follow-up emails to each group every two weeks after the first emailing, data collection was completed in the middle of January 2006, and a total of 2,203 responses were received, representing a 27% response rate.

The descriptive method of data analysis was used to identify the areas with which students were most and least satisfied, based on campuses, colleges, and academic levels. Comparative analyses were also conducted to determine if significant differences existed in student satisfaction based on gender, ethnicity, age, and selection of Troy University as first choice. The major findings are reported in "Highlights of the Findings," and more detailed information, including frequencies of the responses, mean comparisons, demographic information and other related information can be found in the appendices.

Highlights of the Findings

Demographic Information:

Compared with the response rates of similar surveys conducted previously on each of the campuses, the *Fall 2005 Survey* yielded a much better response rate, probably because the online survey mechanism was in place. The majority of the respondents were female (66%), white (54%), and non-traditional students (25 years or older) (70%). This distribution reflected the distribution of the new students in Fall 2005; however, because the TROY campuses serve different types of students (Troy serves traditional students and other campuses serve predominantly non-traditional students), the generalization of survey findings should be made with caution.

Of all the respondents, 59% were undergraduate students (24% first-time freshmen, 32% transfer students, and 2% transient students) and 33% were graduate students (26% new graduate students, 5% transfer, and 2% transient). Overall, 37% were business majors, 26% were Arts & Sciences students, 19% were College of Education students, 15% were Health and Human Services students, and 3% were Communication and Fine Arts students. Additionally, 48% of the students were enrolled on campuses in Alabama (28% in Troy and Phenix City, 14% in Montgomery, 7% in Dothan), 18% were students of University College, and 34% were Distance Learning students.

College Choice and reason for choosing Troy University:

found that approximately 55% of the students selected Troy University because of its flexibility of schedule, and approximately 44% indicated that they chose Troy University because of its academic programs and affordability. Additionally, approximately 39% of the respondents had visited the Troy campuses before

- Adequacy of academic advising
- User-friendliness of on-site registration
- Students seldom getting the 'run-around' when seeking information
- Online schedule of classes being informative and easy to follow
- Classes being offered at convenient times
- The University's offering of a variety of majors
- Sufficiency of tutorial services, and
- Semester/term format accommodating students' learning

Furthermore, the satisfaction means for students of Other Minorities/Blacks and Whites were significantly different, with Whites more satisfied for:

- Faculty's concern for students as individuals
- Feeling of being able to talk with faculty about academic concerns
- Availability of sufficient financial aid options
- Tuition payment plan being beneficial for students
- The University's offering a variety of majors
- Sufficiency of tutorial services
- Convenience of on-campus bookstore hours
- Convenience of purchasing textbooks through Troy Virtual BookStore
- Availability of student organizations
- Semester/term format accommodating student's learning
- Troy University having a good reputation in student's community
- Student's receiving a quality education at Troy University
- Student's recommending Troy University to a friend planning to attend college

Additionally, the satisfaction means for non-traditional students (aged 25 or older) and traditional students (under age 25) were significantly different with non-traditional students more satisfied for:

- Knowledge and helpfulness of personnel
- Faculty's concern about students as individuals
- Availability of sufficient financial aid options
- Tuition payment plan being beneficial for students
- User-friendliness of the on-site registration process
- Classes being offered at convenient times
- Classes being well-organized and well-taught
- Convenience of on-campus bookstore hours
- Convenience of purchasing textbooks through the Troy Virtual BookStore
- Availability of student organizations
- Semester/term format accommodating student's learning

Further analysis found that the satisfaction means for students who selected Troy University as their first choice were significantly different than the means of students who did not select Troy as their first choice for:

- Knowledge and helpfulness of personnel
- Faculty's concern about students as individuals
- Feeling of being able to talk with faculty about academic concerns
- Adequacy of academic advising
- Availability of sufficient financial aid options
- User-friendliness of the online registration process
- User-friendliness of the on-site registration process
- Students seldom getting the 'run-around' when seeking information
- Online schedule of classes being informative and easy to follow
- Appropriateness of the class drop/add procedure
- The University offering a variety of majors at student's location
- Troy University having a good reputation in the student's community
- Student recommending Troy University to

Troy University Fall 2005 New Student Survey Responses - Overall

Q1: Gender

736	33.4	33.6	33.6
-----	------	------	------

Q4: Enrollment Status

		Frequency	Percent	Valid Percent	Cumulative Percent
Valid	Dually-enrolled high school student	3	.1	.1	.1
	First-Time Freshman	531	24.1	24.3	24.4
	First-Time Graduate	569	25.8	26.0	50.4
	UG Transfer	704	32.0	32.2	82.6
	GR Transfer	116	5.3	5.3	87.9
	UG Transient	47	2.1	2.1	90.1
	GR Transient	41	1.9	1.9	92.0
	Other	176	8.0	8.0	100.0
	Total	2187	99.3	100.0	
Missing	0	16	.7		
Total		2203	100.0		

Q5: Campus

Dothan	151	6.9	6.9	6.9
Montgomery	306	13.9	14.0	20.9
Phenix City	146	6.6	6.7	27.5
Troy	448	20.3	20.5	48.0
University College	397	18.0		66.1
	741	33.6	33.9	100.0
	2189	99.4	100.0	
	14	.6		
	2203	100.0		

Q10-3: Select the reasons why you have chosen to attend Troy University: Affordability

Valid	No	1250	56.7	56.7	56.7
	Yes	953	43.3	43.3	100.0
	Total	2203	100.0	100.0	

Q10-8: Select the reasons why you have chosen to attend Troy University: Flexibility of schedule

		Frequency	Percent	Valid Percent	Cumulative Percent
Valid	No	982	44.6	44.6	44.6
	Yes	1221	55.4	55.4	100.0
	Total	2203	100.0	100.0	

Q10-9: Select the reasons why you have chosen to attend Troy University: Social atmosphere

		Frequency	Percent	Valid Percent	Cumulative Percent
Valid	No	2021	91.7	91.8	91.8
	Yes	181	8.2	8.2	100.0
	Total	2202	100.0	100.0	
Missing	System	1	.0		
Total		2203	100.0		

Q10-10: Select the reasons why you have chosen to attend Troy University: Diversity of student body



90.5

Q10-12: Select the reasons why you have chosen to attend Troy University: Performing arts

			Percent	Valid Percent	Cumulative Percent
Valid	No	2156	97.9	97.9	97.9
	Yes	46	2.1	2.1	100.0
	Total	2202	100.0	100.0	
Missing	System	1	.0		
Total		2203	100.0		

Q10-16: Select the reasons why you have chosen to attend Troy University: Friends' recommendation

	Frequency	Percent	Valid Percent	Cumulative Percent
				.0

[REDACTED]

[REDACTED]

[REDACTED]

[REDACTED]

[REDACTED]

2,203

Academic programs, services, and administration	RANK	Agree*	Neutral	Disagree*	N
I am receiving a quality education at Troy University.	1	85.2%	8.9%	5.9%	2061
I would recommend Troy University to a friend who is planning to go to college.	2	83.0%	9.3%	7.8%	2106
The semester/term format at my location accommodates my learning.	3	82.6%	11.5%	5.9%	2006
The printed Schedule of Classes is informative and easy to follow.	4	80.2%	13.0%	6.8%	1981
Troy University has a good reputation in my community.	5	79.8%	13.5%	6.6%	2052
Classes are offered at convenient times.	6	79.3%	11.5%	9.2%	2070
The classes I attend are well organized and well taught.	7	77.9%	13.0%	9.1%	2038
Troy personnel are knowledgeable and helpful.	8	77.4%	12.4%	10.1%	2170
I feel I can take...					

Q12: How did you first learn about TROY?

280	12.7	12.9	12.9
50	2.3	2.3	15.2
40	1.8	1.8	17.0
167	7.6	7.7	24.7
195	8.9	9.0	33.6
36	1.6	1.7	35.3
11	.5	.5	35.8
53	2.4	2.4	38.2
998	45.3	45.8	84.0
348	15.8	16.0	100.0 MC /Shape <</MCID 87 >>BDC9/CS

Q14: What is the best way to advertise to your friends?

36	1.6	1.7	1.7
243	11.0	11.3	13.0
499	22.7	23.2	36.2
53	2.4	2.5	38.6
94	4.3	4.4	43.0
182	8.3	8.5	51.5
989	44.9	46.0	97.4
55	2.5		

Q15-4: Would you describe Troy University to your friends as being: Friendly

904	41.0	100.0	100.0
1298	58.9		
1	.0		
1299	59.0		

Q15-8: Would you describe Troy University to your friends as being: Other

		Frequency	Percent	Valid Percent	Cumulative Percent
Valid	Yes	135	6.1	100.0	100.0
Missing	No	2067	93.8		
	System	1	.0		
	Total	2068	93.9		
Total		2203	100.0		

Troy University Graduating Student Survey Fall 2005

The *Graduating Student Survey* is administered online to students who have filed their Intent to Graduate form. The results presented here are for 606 students who graduated in fall 2005. These results are provided to assist in planning for Troy University. Additional information can be obtained by calling the IRPE office at (334) 670-3640. The major report from the *Graduating Student Survey* will be an annual report and will provide information for students in fall 2005, spring 2006, and summer 2006. *Graduating Student Survey* reports will be published on the IRPE website in fall 2006.

Executive Summary

as well as for each of the campuses. Only the overall responses for Troy University will be provided in this *Fact Book* summation.

Major Findings

The *Troy University Graduating Student Survey* started in fall 2005. On September 23, 2005, the *Survey* was published online, and the link to the *Survey* was emailed to students who intended to graduate in fall 2005 and spring 2006. With follow-up emails sent every other week thereafter, over 1,100 responses were received by the end of 2005 via the online program. Of all the responses, 606 were from students who were graduating in fall 2005, and based on the 606 students, data elements were analyzed and the current report was produced.

Demographic information

Most of the respondents were female (73%), White (60%), and over the age of 24 (70%). While the majority of respondents were US citizens, three percent (3%) were international students representing 13 countries in various parts of the world. Of the American students, 50% were residents of Alabama, 18% were from Georgia, and 13% had their homes in Florida. Approximately 30% of the students were graduating from Troy Campus, 25% were University College students, 13% were from Dothan, 15% were from Phenix City, and 18% were from Montgomery. Additionally, University College students responded from 20 different sites.

Academic information

Academically, approximately 60% of the students were receiving a Bachelor's degree, 30% were being awarded a Master's degree, 8% were receiving Associate degrees, and 3% were receiving the Education Specialist degree. In addition, the Colleges of Arts and Sciences, Business, and Education were each graduating around 30% of the total graduates with 8% of the graduates from the College of Health and Human Services and 4% from the College of Communication and Fine Arts.

According to the findings, over 60% of the students had transferred credit hours from other institutions and over half of the students transferred more than 30 credit hours. While attending the University, approximately two-thirds of the students had taken online courses, and over 50% reported their cumulative GPA's as between 3.5 and 4.0. Of the 606 respondents, more than 50% indicated that they had studied at Troy University for 2 or 3 years while one student reported studying at Troy University over 10 years and another student attended TROY just one year. There was an average of 2.8 years of study at Troy University for the group of students graduating in fall 2005.

Employment and plan after graduation

More than 80% of the graduating students worked while going to school at Troy University and approximately 70% worked full-time (40 hours or over). Upon graduation, over 40% of the students were planning to work in areas related to their programs of study at Troy University, around 20% would continue to work in their current jobs, and 30% indicated that

- Students' perceptions about Troy University (Report 4 – Q26): Ten questions were asked in this section to seek students' opinions about the University in a broad sense. Indicating strong satisfaction with the academic programs, over 80% of the students “Agree” or “Strongly Agree” with the following 4 statements,:
 - My academic program was intellectually challenging and stimulating. (87%)
 - The degree program in which I enrolled is valuable for me in my employment. (86%)
 - Courses in my curriculum contributed to the skills and knowledge required in my field. (85%)
 - The goals, objectives, and requirements for my academic programs were clearly defined. (82%)

The lowest rating in this section was “The University faculty were helpful with my career plan.” Only 65% of the students indicated their agreement with this statement.

- Overall ratings of Troy University: Students were asked to rate their Troy preparation for employment and further education as well as to give an overall rating of their college experiences at Troy University. While all three items had a mean rating of 4.00 or higher, 84% of the students rated their overall college experiences at Troy University as “Excellent” or “Good,” and approximately 80% gave a rating of either “Excellent” or “Good” to their “Troy preparation for employment and further education.”

Recommendation of Troy University

One of the satisfaction indicators used by many colleges and universities is whether students would recommend their universities. The survey found that 95% of the students indicated that they would recommend Troy University to others planning to go to college (63% - Definitely yes and 32% - probably yes), while 93% indicated that they would recommend their academic programs to other students (60% - Definitely yes and 33% - Probably yes). In addition, 90% of the students agreed or strongly agreed that they would attend Troy University again if they could start college over, while 87% indicated they would enroll in the same programs if they were starting over.

Implication

4. The fall 2005 *Graduating Student Survey's* satisfaction measures identified areas needing improvement, especially in the service areas provided by non-academic offices and services. Further investigation may be needed in these areas to determine improvements needed and actions to be taken to better serve the needs of students.
5. Generalization of the *Survey* results to all graduating students should be done with caution since only about 20% of the students responded to the survey.
6. Both descriptive and comparative methods will be used in the analysis of the data collected in the *Troy University Graduating Student Survey* for future annual reports.

Troy University Fall 2005 Graduating Student Survey - Overall

Q1. Term of graduation

		Frequency	Percent	Valid Percent	Cumulative Percent
Valid	Fall 2005	476	78.5	78.5	78.5
	05/T1	59	9.7	9.7	88.3
	05/T2	71	11.7	11.7	100.0
	Total	606	100.0	100.0	

Q2. Gender

		Frequency	Percent	Valid Percent	Cumulative Percent
Valid	Male	163	26.9	26.9	26.9
	Female	442	72.9	73.1	100.0
	Total	605	99.8	100.0	
Missing	0	1	.2		
	Total	606	100.0		

Q4. Age

		Frequency	Percent	Valid Percent	Cumulative Percent
Valid	20-21	18	3.0	3.0	3.0
	22-24	156	25.7	25.8	28.8
	25-29	131	21.6	21.7	50.4
	30-34	95	15.7	15.7	66.1
	35-39	75	12.4	12.4	78.5
	40-49	110	18.2	18.2	96.7
	50-64	19	3.1	3.1	99.8
	65 or over	1	.2	.2	100.0
	Total	605	99.8	100.0	
Missing	0	1	.2		
Total		606	100.0		

Q7. Country

	Frequency	Percent	Valid Percent	Cumulative Percent
Valid	571	94.2	94.2	94.2
BHS	1	.2	.2	94.4
BWA	1	.2	.2	94.6
CAN	1	.2	.2	94.7
CHN	3	.5	.5	95.2
CMR	1	.2	.2	95.4
DOM	1	.2	.2	95.5
GBR	1	.2	.2	95.7
IND	2	.3	.3	96.0
JPN	1	.2	.2	96.2
KOR	2	.3	.3	96.5
SAU	3	.5	.5	97.0
USA	15	2.5	2.5	99.5
VEN	2	.3	.3	99.8
VNM	1	.2	.2	100.0
Total	606	100.0	100.0	

Q8. Home State

Alabama	299	49.3	49.3	49.3
Florida	108	17.8	17.8	80.4
Illinois	119	19.6	19.6	100.0
Total	606			

Q10. UC Site

	Frequency	Percent	Valid Percent	Cumulative Percent
Valid 0	430	71.0	71.0	71.0
1	1	.2	.2	71.1
3	28	4.6	4.6	75.7
6	4	.7	.7	76.4
7	1	.2	.2	76.6
8	1	.2	.2	76.7
11	1	.2	.2	76.9
12	41	6.8	6.8	83.7
14	14	2.3	2.3	86.0
16	1	.2	.2	86.1
18	12	2.0	2.0	88.1
26	21	3.5	3.5	91.6
33	2	.3	.3	91.9
37	1	.2	.2	92.1
46	2	.3	.3	92.4
48	2	.3	.3	92.7
49	17	2.8	2.8	95.5
56	3	.5	.5	96.0
57	5	.8	.8	96.9
58	3	.5	.5	97.4
60	16	2.6	2.6	100.0
Total	606	100.0	100.0	

Q11. Degree program

Associate	49	8.1	8.1	8.1
Bachelor's	357	58.9	59.1	67.2
	178	29.4	29.5	96.7
	20	3.3	3.3	100.0
	604	99.7	100.0	
	2	.3		
	606	100.0		

Q12. College

		Frequency	Percent	Valid Percent	Cumulative Percent
Valid	AS	166	27.4	27.4	27.4
	BU	188	31.0	31.1	58.5
	CF	23	3.8	3.8	62.3
	ED	180	29.7	29.8	92.1
	HH	48	7.9	7.9	100.0
	Total		605	99.8	100.0
Missing	System	1	.2		
Total		606	100.0		

Q12_b. BU programs

37	6.1	18.7	18.7
4	.7	2.0	20.7
22	3.6	11.1	31.8
37	6.1	18.7	

Q12_d. ED programs

Q12_e. HH programs

2	.3	3.7	3.7
16	2.6	29.6	33.3
14	2.3	25.9	59.3
3	.5	5.6	64.8

Q13. Admit status

Dually admitted student	4	.7	.7	.7
First-time freshman	130	21.5	21.7	22.3
UG Transfer student	276	45.5	46.0	68.3
	15	2.5	2.5	70.8
	153	25.2	25.5	96.3
	15	2.5	2.5	98.8
	7	1.2	1.2	100.0
	600	99.0	100.0	
	6	1.0		
	606	100.0		

Q19. Ultimate goal in education

Valid	A Bachelor's degree	25	4.1	5.1	5.1
	A Master's degree	253	41.7	51.6	56.7
	Ed Specialist	47	7.8	9.6	66.3
	A professional degree	22	3.6	4.5	70.8
	A doctoral degree	143	23.6	29.2	100.0
	Total	490	80.9	100.0	
Missing	0	116	19.1		
		606	100.0		

Q22_2. Graduate assistantship

		Frequency	Percent	Valid Percent	Cumulative Percent
Valid	No	604	99.7	99.7	99.7
	Yes	2	.3	.3	100.0
	Total	606	100.0	100.0	

Q22_3. Grants

		Frequency	Percent	Valid Percent	Cumulative Percent
Valid	No	439	72.4	72.4	72.4
	Yes	167	27.6	27.6	100.0
	Total	606	100.0	100.0	

Q22_4. Loans



Q22_7. Third party pay

		Frequency	Percent	Valid Percent	Cumulative Percent
Valid	No	578	95.4	95.4	95.4
	Yes	28	4.6	4.6	100.0
	Total	606	100.0	100.0	

Q22_8. Other financial aid

		Frequency	Percent	Valid Percent	Cumulative
Valid	No	550	90.8	90.8	90.8
	Yes	56	9.2	9.2	100.0
	Total	606	100.0	100.0	

Q22_10. Specified for Other Financial Aid

557	91.9	91.9	91.9
1	.2	.2	92.1
1	.2	.2	92.2
1	.2	.2	92.4
1	.2	.2	92.6
1	.2	.2	92.7
1	.2	.2	92.9
1	.2	.2	93.1
1	.2	.2	93.2

Troy University Fall 2005 Graduating Student Survey Report

Troy University Fall 2005 Graduating Student Survey Report

Report 2: Question 24—Students' ratings of their education and academic support services at Troy University

Rank*	Education and Academic Support Services	Number of Responses	Percentage	Number of Responses	Percentage	Number of Responses	Percentage	Number of Responses	Percentage	Number of Responses	Percentage	Mean Rating	Standard Deviation	Standard Error
1	Faculty	251	43%	263	44%	60	10%	14	2%	1	0%	5.5	4.2	0.15
2	Academic Advising	231	39%	263	45%	6	12%	1	3%	3	1%	5.5	4.20	0.1
3	Library	201	34%	25	44%	1	15%	25	4%	14	2%	5.0	4.03	0.4
4	Student Center	160	30%	250	41%	1	1%	24	5%	4	1%	5.2	4.02	0.5
5	Registrar	12	31%	25	45%	10	1%	21	4%	12	2%	5.2	3.0	0.1
6	Financial Aid	14	31%	250	42%	114	1%							

Report 5: Questions 27–Students' overall ratings of their preparation and experiences at Troy University

Overall Ratings	1	2	3	4	5	6	7
	%	%	%	%	%	%	%

Q32: To which student organizations did you belong while attending Troy?

Q32_1. Departmental

		Frequency	Percent	Valid Percent	Cumulative Percent
Valid	No	528	87.1	87.1	87.1
	Yes	78	12.9	12.9	100.0
	Total	606	100.0	100.0	

Q32_2. Professional

		Frequency	Percent	Valid Percent	Cumulative Percent
Valid	No	520	85.8	85.8	85.8
	Yes	86	14.2	14.2	100.0
	Total	606	100.0	100.0	

Q32_3. Religious

Valid	No	574	94.7	94.7	94.7
	Yes	32	5.3	5.3	100.0
	Total	606	100.0	100.0	

Q32_11. Sports

		Frequency	Percent	Valid Percent	Cumulative Percent
Valid	No	590	97.4	97.4	97.4
	Yes	16	2.6	2.6	100.0
	Total	606	100.0	100.0	

Q32_12. None

241 39.8

Troy University 2005 Employer Survey

Executive Summary

The Troy University Institutional Research, Planning, and Effectiveness (IRPE) Office conducted an Employer Survey in fall 2005. There were two purposes in surveying employers of Troy University graduates. The first purpose was to determine the characteristics that employers seek in hiring college graduates. The second purpose was to obtain ratings of the Troy University graduates hired by the employers.

The top ten characteristics that employers seek in college graduates that they hire are:

1. Reading skills	100%
2. Work ethic	100%
3. Writing skills	97%
4. Ability to work with co-worker/supervisor	94%
5. Professional ethics in decision-making	93%
6. Job know-how	84%
7. Mathematical skills	80%
8. Courses in major related to organization	80%
9. Technology skills	76%
10. Knowledge of philosophy of organization	64%

The top 10 characteristics of Troy University employed were:

1. Reading skills	96%
2. Ability to work with co-worker/supervisor	95%
3. Oral communication	93%
4. Listening skills	90%
5. Technology skills	89%
6. Work ethic	88%
7. Work output	87%
8. Job skills specific to position	87%
9. Quality of work	87%
10. Writing skills	86%

We mailed surveys on October 3, 2006 to 496 employers of Troy University graduates. Of those mailed, 30 were sent to Dothan employers, 92 to Montgomery employers, and the remaining 374 to Troy University employers. After the surveys were returned to Institutional Research, Planning, and Effectiveness office, each survey was entered online and results were downloaded into survey software for analyzing. Out of 496 surveys mailed, 89 employers responded (18%).

There were eight responses (27%) from the Dothan mail-out. There were 13 responses (14%) from the Montgomery mail-out and there were 68 responses (18%) from Troy.

TROY UNIVERSITY
RESULTS OF THE EMPLOYER SURVEY – TROY SYSTEM
FALL SEMESTER 2005
NUMBER OF RESPONDENTS 89

- 3 We expect candidates to interview well.
- 3 High character, responsible, organized.
- 3 We hire nursing students.
- 3 Classroom management.
- 3 How to dress and groom for work.
- 3 Ability to develop appropriate rapport with students.
- 3 Professionalism, maturity, desire to work, commitment to work, loyalty to organization.
- 3 Previous work experience.

					(please list) <i>PLEASE SEE BELOW.</i>			
	N	%	N	%	N	%	N	%
	10	11%	68	76%	12	13%	0	0%

- ³ Drive, responsibility, willingness to commit 100% to the organization.
- ³ None have been hired – only 1 or 2 have applied.
- ³ Areas that need improvement are technology training and general business aptitude. Our company struggles today with less educated or older workers and management who do not or will not learn new technology. They must be able to solve problems.
- ³ They are individuals and have a diverse work knowledge and drive.
- ³ The writing ability of graduates is very low and far below what I expect from a master's level graduate.

43. Based on your observation of employees and our knowledge of Troy University, would you hire another TROY graduate if a position were available? (If no, please tell us why) <i>PLEASE SEE BELOW.</i>		
--	--	--

Yes

NO

SECTION III: Please respond to the items regarding Career Services of Troy University.

45. How did your organization identify the Troy University graduates you hired?

Career Services Offices
Referral/Job Posting, etc

Websites with Assessment Information

There are numerous external websites that provide an abundance of assessment information and some comparison data. Some of the better sites include:

- 1) North Carolina State University's Internet Resources for Higher Education Outcomes Assessment Website:

Troy Campus Appendix

(Includes data for Troy-On-Campus, Lockheed Martin, Troy Distance Learning, and Montgomery Nursing)

University Graduates										
6. Degrees Conferred - 2004-2005										
	Associate's		Bachelor's		Master's		Education Specialist		Total	
Total	47	3%	891	59%	574	38%	1	0%	1,513	100%
7. Number of Alumni:										
		39,287								
University Personnel										
8. Full-time Instructional Faculty										
Total	229									
9. Full-time Tenured Instructional Faculty										
Total	130									
10. Employee Analysis										
	Full-time Employees		Part-time Employees		Total Employees					
Total	666	63%	387	37%	1,053	100%				

Housing and Dining

Number of Bed Spaces	1,602
03/FA Occupancy	100%
Most Preferred Residence Hall	Clements
Learning Community Initiative	
195 Number of students who stayed in the program for the entire semester	
2.26 GPA for L/L males -- 1.94 GPA for freshmen males overall	
2.68 GPA for L/L females – 2.41 GPA for freshmen females overall	
89% Number who participated in extracurricular activity	
Dining Services	
1,228 participants in the meal program – 05/FA	
Options: Stewart Dining Hall (SAGA); Frank’s Place; Trojan Food Express; Café Ala’ Carte	
Meal Plans: 19 plus; 12 plus; 9 plus; 6 plus	

University Police/Safety

24 Hour/7 days a week patrols and enforcement
Car patrols, foot patrols, bike patrols, parking monitor patrols, building security patrols and local law enforcement patrols
Other activities: lights-out reports; safety talks; SGA night walk; safety alerts; weekly crime reports to campus community; on-campus security escorts; Arrive Alive; Click-it or Ticket-it
Safe, secure campus with Chief, 1 Dispatcher, 1 Investigator, 1 Safety and Security Officer, 1 Bike Officer, 6 Patrol Officers, 2 Security/Parking Monitors
Parking spaces: National average 47 spaces per 100 students TSU average 47 spaces per 100 students

Student Services/Entertainment/Recreation

University Activities Council (UAC) provides concerts, movies, lectures and other special events.
Intramural Sports provides 18 different sporting events to men and women

Troy Campus
Summary of Headcount Enrollment
Fall 2001 through Fall 2005

Terms	<u>Undergraduate</u>		<u>Graduate</u>		<u>Total</u>		<u>Grand</u>
	Full-Time	Part-Time	Full-Time	Part-Time	Full-Time	Part-Time	<u>Total</u>
Fall 2001	3,398	763	478	827	3,876	1,590	5,466
Fall 2002	3,684	569	678	1,264	4,362	1,833	6,195
Fall 2003	3,208	929	544	1,390	3,752	2,319	

**Troy Campus
Headcount Enrollment by Student Age Group,
Enrollment Status, and Academic Level
Fall 2005**

	Part-Time		Total		Total %	
	Undergraduate	Graduate	Undergraduate	Graduate	Undergraduate	Graduate
	16	0	22	0	0.43%	0.00%
	83	0	1,225	1	24.07%	0.04%
	23	2	1,768	3	34.74%	0.12%
		97	1,284	249	25.23%	10.34%
		377	406	704	7.98%	29.24%
		325	168	536	3.30%	22.26%
			97	393	1.91%	16.32%
40			84	411	1.65%	17.07%
50			31	111	0.61%	4.61%
65 & O			4	0	0.08%	0.00%
Age Unkn				0	0.00%	0.00%
Total				2,408	100.00%	100.00%

Average Age

	Undergraduate	Graduate	Total Average
Male	20	21	24
Female	20	22	27
Total Average	20	22	26

**Troy Campus
Headcount Enrollment
By Classification and Enrollment Status
Fall 2001 through Fall 2005**

Classification	Full-Time	Percent	Part-Time	Percent	Total
Fall 2001					
Freshmen	1,358	88.0%	185	12.0%	1,543
Sophomore	627	81.4%	143	18.6%	770
Junior	634	87.8%	88	12.2%	722
Senior	705	76.3%	219	23.7%	924
Unclassified	71	37.6%	118	62.4%	189
Post Baccalaureate	3	23.1%	10	76.9%	13
Graduate	478	36.63%	827	63.37%	1,305
Total	3,876	70.91%	1,590	29.09%	5,466
Fall 2002					
Freshmen	1,544	90.08%	170	9.92%	1,714
Sophomore	757	87.92%	104	12.08%	861
Junior	669	87.34%	97	12.66%	766
Senior	703	78.90%	188	21.10%	891
Unclassified	9	60.00%	6	40.00%	15
Post Baccalaureate	2	33.33%	4	66.67%	6
Graduate	678	34.91%	1,264	65.09%	1,942
Total	4,362	70.41%	1,833	29.59%	6,195
Fall 2003					
Freshmen	1,475	78.33%	408	21.67%	1,883
Sophomore	556	74.33%	192	25.67%	748
Junior	638	78.96%	170	21.04%	808
Senior	512	78.77%	138	21.23%	650
Unclassified	23	76.67%	7	23.33%	30
Post Baccalaureate	4	22.22%	14	77.78%	18
Graduate	544	28.13%	1,390	71.87%	1,934
Total	3,752	61.80%	2,319	38.20%	6,071
Fall 2004					
Freshmen	1,607	85.52%	272	14.48%	1,879
Sophomore	748	80.17%	185	19.83%	933
Junior	738	85.22%	128	14.78%	866
Senior	865	78.49%	237	21.51%	1,102
Unclassified	8	44.44%	10	55.56%	18
Post Baccalaureate	0	---	0	---	0
Graduate	646	29.15%	1,570	70.85%	2,216
Total	4,612	65.75%	2,402	34.25%	7,014
Fall 2005					
Freshmen	1,371	84.01%	261	15.99%	1,632
Sophomore	884	84.19%	166	15.81%	1,050
Junior	817	82.53%	173	17.47%	990
Senior	945	78.16%	264	21.84%	1,209
Unclassified	172	83.09%	35	16.91%	207
Post Baccalaureate	0	0.00%	1	100.00%	1
Graduate	1,029	42.73%	1,379	57.27%	2,408
Total	5,218	69.60%	2,279	30.40%	7,497

**Troy Campus
 Fall Headcount Enrollment Comparison
 By Ethnicity, Gender, and Academic Level
 Fall 2001 through Fall 2005**

Ethnicity/Academic Level	Fall 2001			Fall 2002		Fall 2003	Fall 2004	Fall 2005
	Male	Female	Total	Male	Female			

Troy Campus
Headcount Enrollment by College and Academic Level
Fall 2005

College/Academic Level	Fall 2005 #	%
<u>Arts & Sciences</u>		

**Troy Campus
Headcount Enrollment
By Major & Academic Level
Fall 2005**

Major	Fall 2005	
	Undergraduate	Graduate
Accounting	170	0

Journalism
Language Arts Education
Management

126
14

0
9

126nt

Troy Campus
 Permanent Residence By Alabama Counties
 Fall 2005

Autauga	117	Coosa	8	Jefferson	207	Pike	1,100
Baldwin	167	Covington	188	Lamar	2	Randolph	14
Barbour	107	Crenshaw	180	Lauderdale	11	Russell	26
Bibb	4	Cullman	15	Lawrence	2	St. Clair	10
Blount	8	Dale	208	Lee	77	Shelby	141
Bullock	24	Dallas	47	Limestone	9	Sumter	1
Butler	79	Dekalb	10	Lowndes	17	Talladega	21
Calhoun	19	Elmore	173	Macon	22	Tallapoosa	33
Chambers	26	Escambia	54	Madison	64	Tuscaloosa	27
Cherokee	2	Etowah	5	Marengo	11	Walker	15
Chilton	38	Fayette	1	Marion	3	Washington	4
Choctaw	2	Franklin	1	Marshall	11	Wilcox	9
Clarke	27	Geneva	81	Mobile	163	Winston	2
Clay	4	Greene	1	Monroe	33	Unknown	1
Cleburne	2	Hale	3	Montgomery	452		
Coffee	316	Henry	83	Morgan	10		
Colbert	4	Houston	258	Perry	2		
Conecuh	27	Jackson	4	Pickens	2	TOTAL	4,795

**Troy Campus
Headcount Enrollment by State/Territory
Fall 2005**

Alabama	4,795	Nevada	5
Alaska	2	New Hampshire	5
Arizona	30	New Jersey	13
Arkansas	8	New Mexico	27
California	54	New York	27
Colorado	26	North Carolina	74
Connecticut	4	North Dakota	3
Delaware	5	Ohio	24
District of Columbia	2	Oklahoma	10
Florida	446	Oregon	6
Georgia	456	Pennsylvania	18
Guam	1	Puerto Rico	1
Hawaii	8	Rhode Island	53
Idaho	1	South Carolina	1
Illinois	22	South Dakota	23
Indiana	7	Tennessee	62
Iowa	5	Texas	3
Kansas	13	Utah	1
Kentucky	9	Vermont	294
Louisiana	33	Virginia	33
Maine	0	Washington	1
Maryland	58	West Virginia	6
Massachusetts	4	Wisconsin	5
Michigan	9	Wyoming	113
Minnesota	1	Other/No Code	0
Mississippi	25		
Missouri	10		
Montana	23		
Nebraska	9	TOTAL	6,874

Source: Office of Institutional Research, Planning and Effectiveness

**Troy Campus
Headcount Enrollment
By Foreign Countries
Fall 2005**

Aruba	1	Pakistan	6
Australia	5	Poland	2
Azerbaijan			

**By Term and Academic Level
2000-2001 through Fall 2005**

Number of Credit Hours

% of Total Credit Hours

Term/Year

Troy Campus
ACHE Full-Time Equivalency (Student FTE)*
By Term and Academic Level
2000-2001 through Fall 2005

Term/Year	Lower Division	Upper Division	FTE Total			Lower Division	% of FTE			
			Undergraduate	Graduate	Total		Upper Division	Undergraduate	Graduate	Total
Fall 2000	2,271	1,309	3,580	425	4,005	Total				

**TROY CAMPUS
ACT NORMS
ENROLLED FIRST-TIME FIRST-YEAR
FRESHMEN**

Fall	English	Math	Reading	Science Reasoning	Composite
1994	21.1	19.8	21.7	20.5	20.9
1995	21.2	19.8	22.1	20.6	21.0
1996	21.3	20.0	21.5	20.7	21.0
1997	21.0	19.6	21.4	20.4	20.7
1998	21.2	19.6	21.5	20.4	20.8
1999	21.1	19.4	21.3	20.3	20.6
2000	21.2	19.7	21.7	20.7	21.0
2001	21.2	19.8	21.4	20.7	20.9
2002	21.1	19.6	21.0	20.4	20.7
2003	20.9	19.2	20.9	20.3	20.4
2004	20.8	19.2	21.0	20.2	20.4

ACT CLASS PROFILE REPORT

FRESHMAN CLASS 2005 - 2006

TROY UNIVERSITY
TROY, AL

Code 0048

EXECUTIVE SUMMARY

score reports received by your campus. The number of enrolled 2005-2006 ACT-tested freshmen (n=952) represents 100% of students enrolled full time. Enrolled counts shown in this report are limited to those students identified by the National Student Clearinghouse as enrolled full time. It is assumed that enrolled students for whom a full-time status was not provided are full-time.

ACT composite The average ACT composite score for your ACT-tested enrolled freshmen was 20.7 (men = 20.6, women = 20.7). The national average for 2004-2005 high school graduates was 20.9.

ACT 2nd Grade College	Year	Nct	Avg ACT Comp	Pct with Pass Courses	Pct. Minority	Pct Scoring 28+	Pct in Top Qtr. in HS	ACT 1st Grade College
-----------------------	------	-----	--------------	-----------------------	---------------	-----------------	-----------------------	-----------------------

Planned Educational Nct	Comp	Courses	Avg ACT Composite	Pct with Group in HS	Pct in HS College	Pct in HS College	ACT 1st Grade	ACT 2nd Grade	Major
Business & Management	90		19.8	67	37	7	46	40	17
Undecided			83	21.1	71	14	5	45	43
Social Sciences			56	22.0	71	30	13	45	43
Education			45	21.0	76	22	9	51	51

Average ACT scores by Core Curriculum (Core or more is defined as at least 4 years of English, and at least 3 years of Mathematics and Natural Sciences):

Group	Nct	English	Math	Reading	Science	Composite
Core or more	614	22.0	20.4	21.8	21.1	21.4
Less than core	338	19.3	18.2	19.9	19.4	19.2
Total Group	952	21.1	19.6	21.1	20.5	20.7

Average ACT Scores by High School Rank

English	Math	Reading	Science	Composite	
Top Quarter	281	22.6	21.7	22.3	22.2
Second Quarter	276	19.0	17.9	17.9	19.2
Third Quarter	91	17.8	17.1	17.1	18.4
Bottom Quarter	16	19.5	17.4	17.4	20.4

Code 0048

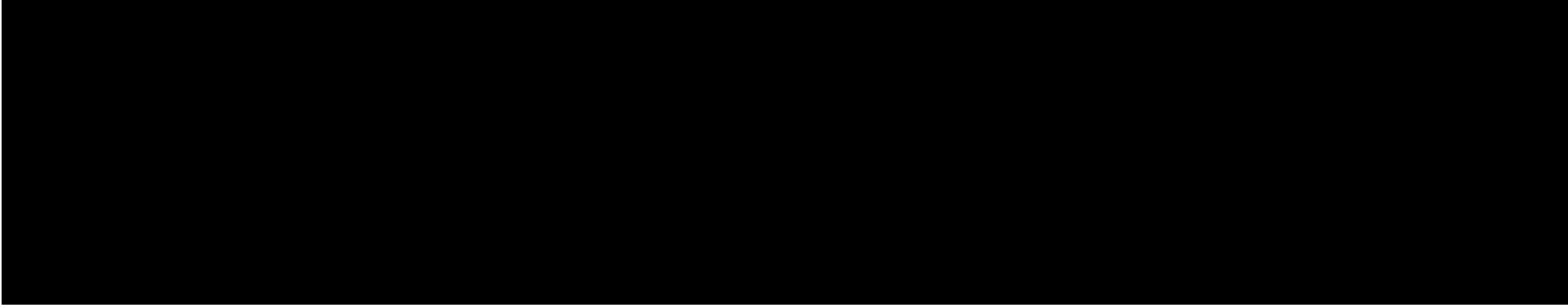
TROY UNIVERSITY
TROY, AL



Science	19.7	4.0	20.5	4.1	19.5	3.9	---	---	---	---	21.5	4.5	21.4	4.1		
	21.7	4.7	21.6	4.3			Composite				19.7	4.0	20.7	4.2	19.4	3.9

ACT Quartile Values:

---	---	17.4	17.6	English Q1 (25th percentile)	15.9	16.9	15.7
	Q2 (median)	19.6	20.7	19.3	21.0	20.9	20.9
	Q3 (75th percentile)	23.1	24.8	22.7	25.2	24.8	24.8



69.8%	Mother has at least <i>some</i> college education	61.3%
47.1%	Mother has a college degree	42.5%
62.0%	Do not expect to use aid which must be repaid (loans) to help pay for college	55.1%
78.3%	Expect to use no more than \$1000 of their own funds (savings, workstudy, other income) to pay for their first year of college.	74.5%
42.5%	Are confident that they will have sufficient funds for college	33.7%
65.8%	Plan to live in campus or Greek housing during first term	71.4%

Objectives considered to be essential or very important:

79.5%	Raising a family	76.0%
80.2%	Being very well off financially	77.5%
70.4%	Helping others who are in difficulty	65.4%
60.2%	Becoming an authority in my field	58.0%
56.2%	Integrating spirituality into my life	37.4%
46.0%	Having administrative responsibility for others' work	41.2%

(Top 5) Reasons noted as very important in deciding to attend college:

82.3%	1. To get training for a specific career	73.0%
75.0%	2. To be able to make more money	74.5%
71.8%	3. To learn more about things that interest me	74.8%
68.6%	4. To be able to get a better job	73.9%
60.8%	5. To gain a general education and appreciation of ideas	61.9%

(Top 5) Factors influencing student's decision to attend this college:

53.0%	1. I was offered financial assistance	29.8%
48.6%	2. This college's graduates get good jobs	43.4%
48.2%	3. I wanted to go to a college about this size	35.8%
47.7%	4. This college has a very good academic reputation	48.2%
44.5%	5. The cost of attending this college	43.5%

Student Estimates: Chances are *very good* that he/she will:

44.5%	Get a job to help pay for college expenses	47.5%
59.3%	Make at least a "B" average	57.3%
59.3%	Socialize with someone of another racial/ethnic group	61.1%
58.5%	Be satisfied with your college	46.2%
26.5%	Communicate regularly with professors	27.7%
10.4%	Transfer to another college prior to graduation	9.2%
26.6%	Join a fraternity or sorority	10.4%
15.0%	Study abroad	19.2%

Student agrees *strongly* or *somewhat* that:

28.0%	Abortion should be legal	53.1%
50.9%	It's important to have laws prohibiting homosexual relationships	28.6%
27.7%	Activities of married women are best confined to home/family	22.8%
21.0%	The death penalty should be abolished	30.1%
27.8%	Racial discrimination is no longer a major problem in America	22.5%
45.8%	Only volunteers should serve in armed forces	61.6%
89.8%	Through hard work, everyone can succeed in America	81.3%
45.8%	The fed. government is not doing enough to control pollution	61.6%

Troy Campus

Degrees Conferred by Academic Program

Academic Year 2004-2005*

CIP Code	Academic Program	Associate	Bachelor's	Master's	Educational Specialist	Total
03.0104	Environmental Science	0	5	0	0	5
09.0401	Journalism	0	25	0	0	25
09.0701	Radio and Television	0	20	0	0	20
11.0101	Computer and Information Sciences, General	0	15	0	0	15
13.0901	Social and Philosophical Foundations of Education	0	0	27	0	27
13.1202	Elementary Education and Teaching	0	47	28	0	75
13.1205	Secondary Education and Teaching	0	30	6	0	36
13.1206	Teacher Education, Multiple Levels	0	23	13	1	37
15.1102	Surveying Technology/Surveying	0	5	0	0	5
23.0101	English Language and Literature, General	0	13	0	0	13
23.1001	Speech and Rhetorical Studies	0	8	0	0	8
26.0101	Biology/Biological Sciences, General	0	39	0	0	39
27.0101	Mathematics, General	0	10	0	0	10
30.9999	Multi/Interdisciplinary Studies, Other Sport and Fitness	0	0	10	0	10
31.0504	Administration/Management	0	28	4	0	32
40.0501	Chemistry, General	0	5	0	0	5
42.0101	Psychology, General	0	33	0	0	33

42(10)Tj/TT1 1 Tf-039 T16s3d(M)6(aComnt)-uessnSttSt/i00001042MaCocnsIsst/i0000531. 101 33aCicgu(t)-6(r)-711(al)-8eBiLnagemw Enf Getat

0 0 1 42(10)30101 0 Snis Scsus Quafre poriol025

0 0 283 1

0 SPubinstratun9(d Fit)-So(ie)-9(li)-al porol-0.0036 Tc d0071 Tw6.5584.7227 Td[4]8(2Pal)Tofrdi11(c)1(c)0(ol28(n)i11(Ot)-6(her)-47)i11r028

TTa0n(u)2(a)9]r00%227(d Fr)-6rial00000

**Troy Campus
Degrees Conferred by College
2000-01 through 2004-2005***

**Summary of Full-Time Faculty Salaries by Rank and Gender
Fall 2005**

RANK	9-10 Month				11-12 Month			
	Number		Average Salary		Number		Average Salary	
	Men	Women	Men	Women	Men	Women	Men	Women
Professor	19	6	\$67,515	\$62,237	12	5	\$87,951	\$93,036
Associate Professor	24	17	\$55,083	\$53,758	15	9	\$69,029	\$72,386
Assistant Professor	37	41	\$47,966	\$47,020	5	5	\$54,866	\$60,977
Instructor	1	8	\$31,200	\$39,417	4	3	\$40,429	\$45,103
Lecturer	7	9	\$33,816	\$31,273	1	0	\$43,680	\$0
Undesignated	0	1	\$0	\$31,493	0	0	\$0	\$0
Total	88	82	\$52,812	\$46,871	37	22	\$69,475	\$70,766

Source: Office of Institutional Research, Planning and Effectiveness

	Full-Time	Part-Time	Full-Time	Part-Time	Full-Time	Part-Time
Executive/Administrative	37	0	26	0	63	0
Faculty	125	49	104	76	229	125
Other Professional	84	9	132	2	216	11
Graduate Assistants	0	20	0	24	0	44
Secretarial/Clerical	5	29	133	76	138	105
Technical	9	20	3	22	12	42
Skilled Craft	3	0	2	0	5	0



Function (FTE)	1999	2000	2001	2002*	2003	2004	2005
Instruction	\$ 3,694	\$ 3,813	\$ 3,801	\$ 3,400	\$ 3,895	\$ 3,789	\$ 3,358
Research	\$ 5	\$ 19	\$ 58	\$ 28	\$ 38	\$ 48	\$ 59
Public Service	\$ 890	\$ 1,073	\$ 1,086	\$ 946	\$ 1,086	\$ 1,074	\$ 837
Academic Support	\$ 386	\$ 310	\$ 317	\$ 265	\$ 257	\$ 264	\$ 305
Athletics	\$ 665	\$ 701	\$ 717	\$ 835	\$ 997	\$ 1,012	\$ 958
Libraries	\$ 375	\$ 358	\$ 323	\$ 286	\$ 319	\$ 304	\$ 254
Student Services	\$ 556	\$ 565	\$ 588	\$ 492	\$ 563	\$ 534	\$ 504
Institutional Support	\$ 865	\$ 892	\$ 918	\$ 741	\$ 912	\$ 999	\$ 1,072
Op. & Maint. Of Plant	\$ 1,105	\$ 1,117	\$ 1,275	\$ 1,204	\$ 1,420	\$ 1,288	\$ 1,262
Depreciation	\$ -	\$ -	\$ -	\$ 431	\$ 448	\$ 477	\$ 430
Scholarship	\$ 2,080	\$ 1,841	\$ 1,945	\$ 969	\$ 1,379	\$ 1,129	\$ 1,112
Total Ed. & Gen. Expenses	\$ 10,620	\$ 10,688	\$ 11,029	\$ 9,598	\$ 11,314	\$ 1,092	\$ 1,015
Interest Expense	\$ -	\$ -	\$ -	\$ 149	\$ 181	\$ 212	\$ 187
Transfers to Unexpended Plant	\$ -	\$ -	\$ -	\$ 345	\$ 713	\$ (41)	\$ 73
Mandatory Transfers	\$ 376	\$ 374	\$ 314	\$ -	\$ -	\$ -	\$ -
Nonmandatory Transfers	\$ 47	\$ 346	\$ 262	\$ -	\$ -	\$ -	\$ -
Total Educational & General	\$ 11,044	\$ 11,408	\$ 11,605	\$ 10,092	\$ 12,208	\$ 11,089	\$ 10,412
Auxiliary Enterprises (net)	\$ 1,236	\$ 1,114	\$ 1,100	\$ 974	\$ 973	\$ 1,062	\$ 1,012
Mandatory Transfers	\$ 47	\$ 5	\$ -	\$ -	\$ -	\$ -	\$ -
Nonmandatory Transfers	\$ -	\$ 3	\$ 3	\$ -	\$ -	\$ -	\$ -
Total Expenditures & Transfers	\$ 12,327	\$ 12,531	\$ 12,708	\$ 11,066	\$ 13,181	\$ 12,151	\$ 11,424

Phenix City Campus Appendix

Phenix City Campus																
Quick Facts																
Fall Semester 2005																
Student Enrollment																
1. Headcount, Course, FTE Student Enrollment																
	Headcount	1,781	Course	4,721	SACS FTE	1,350	ACHE FTE	1,060								
2. Full-time/Part-time Headcount																
	Full-time Undergraduates				Part-time Undergraduates				Full-time Graduates				Part-time Graduates		Total	
Total	289	16%	Total		372	21%	Total		342	19%	Total		778	44%	1,781	100%
3. Headcount by Classification																
	Freshman		Sophomore		Junior		Senior		Unclassified/Other		Graduate		Total			
Total	67	4%	39	2%	121	7%	376	21%	58	3%	1,120	63%	1,781	100%		
4. Headcount by Gender																
	Male		Female		Total											
Total	355	20%	1,426	80%	1,781	100%										
5. Headcount by Ethnicity																
	Non-Resident Alien		African American		American Indian		Asian		Hispanic		Caucasian		Ethnicity Unknown	Total		
Total	0	0.0%	911	51.2%	1	0.1%	6	0.3%	30	1.7%	810	45.5%	23	1.3%	1,781	100%

Phenix City Campus
Summary of Headcount Enrollment
Fall 2001 through Fall 2005

Terms

Undergraduate

Graduate

**Phenix City Campus
Headcount Enrollment
By Classification and Enrollment Status
Fall 2001 through Fall 2005**

Classification	Full-Time	Percent	Part-Time	Percent	Total
Fall 2001					
Freshmen	70	45.2%	85	54.8%	155
Sophomore	10	38.5%	16	61.5%	26
Junior	35	47.9%	38	52.1%	73
Senior	64	37.6%	106	62.4%	170
Unclassified	3	15.8%	16	84.2%	19
Post Baccalaureate	0	0.0%	3	100.0%	3
Graduate	255	29.48%	610	70.52%	865
Total	437	33.33%	874	66.67%	1,311
Fall 2002					
Freshmen	38	39.58%	58	60.42%	96
Sophomore	38	54.29%	32	45.71%	70
Junior	71	68.27%	33	31.73%	104
Senior	79	49.07%	82	50.93%	161
Unclassified	0	0.00%	1	100.00%	1
Post Baccalaureate	0	0.00%	2	100.00%	2
Graduate	353	40.53%	518	59.47%	871
Total	579	44.37%	726	55.63%	1,305
Fall 2003					
Freshmen	24	26.09%	68	73.91%	92
Sophomore	12	57.14%	9	42.86%	21
Junior	24	45.28%	29	54.72%	53
Senior	188	41.69%	263	58.31%	451
Unclassified	0	---	0	---	0
Post Baccalaureate	0	---	0	---	0
Graduate	459	53.62%	397	46.38%	856
Total	707	48.00%	766	52.00%	1,473
Fall 2004					
Freshmen	98	51.04%	94	48.96%	192
Sophomore	33	57.89%	24	42.11%	57
Junior	81	56.25%	63	43.75%	144
Senior	169	57.68%	124	42.32%	293
Unclassified	1	33.33%	2	66.67%	3
Post Baccalaureate	0	---	0	---	0
Graduate	494	43.18%	650	56.82%	1,144
Total	876	47.79%	957	52.21%	1,833
Fall 2005					
Freshmen	21	31.34%	46	68.66%	67
Sophomore	17	43.59%	22	56.41%	39
Junior	48	39.67%	73	60.33%	121
Senior	164	43.62%	212	56.38%	376
Unclassified	39	69.64%	17	30.36%	56
Post Baccalaureate	0	0.00%	2	100.00%	2
Graduate	342	30.54%	778	69.46%	1,120
Total	631	35.43%	1,150	64.57%	1,781

**Phenix City Campus
Fall Headcount Enrollment Comparison
By Ethnicity, Gender, and Academic Level
Fall 2001 through Fall 2005**

Ethnicity/Academic Level	Fall 2001			Fall 2002			Fall 2003			Fall 2004			Fall 2005		
	Male	Female	Total	Male	Female	Total	Male	Female	Total	Male	Female	Total	Male	Female	Total
<u>Non-Resident Alien</u>															
Undergraduate	0	0	0	0	0	0	0	0	0	0	0	0	0	0	0
Graduate	0	0	0	1	0	1	0	0	0	0	0	0	0	0	0
Total	0	0	0	1	0	1	0	0	0	0	0	0	0	0	0
<u>African American</u>															
Undergraduate	28	164	192	42	146	188	43	244	287	63	277	340	54	283	337
Graduate	73	303	376	81	354	435	80	368	448	101	482	583	110	464	574
Total	101	467	568	123	500	623	123	612	735	164	759	923	164	747	911
<u>American Indian</u>															
Undergraduate	0	2	2	0	1	1	0	1	1	0	0	0	0	0	0
Graduate	0	0	0	0	1	1	0	0	0	0	0	0	0	1	1
Total	0	2	2	0	2	2	0	1	1	0	0	0	0	1	1
<u>Asian/Pacific Islander</u>															
Undergraduate	1	1	2	3	2	5	2	2	4	0	2	2	1	3	4
Graduate	2	0	2	1	0	1	0	0	0	2	1	3	0	2	2
Total	3	1	4	4	2	6	2	2	4	2	3	5	1	5	6
<u>Hispanic</u>															
Undergraduate	0	7	7	2	3	5	3	5	8	4	9	13	6	7	13
Graduate	2	1	3	1	1	2	3	4	7	5	10	15	7	10	17
Total	2	8	10	3	4	7	6	9	15	9	19	28	13	17	30
<u>Caucasian</u>															
Undergraduate	86	135	221	74	145	219	93	212	305	75	244	319	68	230	298
Graduate	53	369	422	85	302	387	73	315	388	95	415	510	106	406	512
Total	139	504	643	159	447	606	166	527	693	170	659	829	174	636	810
<u>Unknown</u>															
Undergraduate	6	16	22	0	16	16	2	10	12	2	13	15	1	8	9
Graduate	8	54	62	12	32	44	4	9	13	7	26	33	2	12	14
Total	14	70	84	12	48	60	6	19	25	9	39	48	3	20	23
<u>Total</u>															
Undergraduate	121	325	446	121	313	434	143	474	617	144	545	689	130	531	661
Graduate	138	727	865	181	690	871	160	696	856	210	934	1,144	225	895	1,120
Total															

Phenix City Campus

Headcount Enrollment by College and Academic Level

Fall 2005

College/Academic Level	Fall 2005	
	#	%
<u>Arts & Sciences</u>		
Undergraduate	5	0.76%
Graduate	0	0.00%
Total	5	0.28%
<u>Business</u>		
Undergraduate	273	41.30%
Graduate	188	16.79%
Total	461	25.88%
<u>Communication & Fine Arts</u>		
Undergraduate	0	0.00%
Graduate	0	0.00%
Total	0	0.00%
<u>Education</u>		
Undergraduate	260	39.33%
Graduate	880	78.57%
Total	1,140	64.01%
<u>Health & Human Services</u>		
Undergraduate	108	16.34%
Graduate	41	3.66%
Total	149	8.37%
<u>Unclassified</u>		
Undergraduate	15	2.27%
Graduate	11	0.98%
Total	26	1.46%
<u>Total</u>		
Undergraduate	661	100.00%
Graduate	1,120	100.00%
Total	1,781	100.00%

Phenix City Campus
 Permanent Residence By Alabama Counties
 Fall 2005

Autauga	0	Coosa	0	Jefferson	3	Pike	14
Baldwin	1	Covington	2	Lamar	0	Randolph	3
Barbour	22	Crenshaw	1	Lauderdale	0	Russell	294
Bibb	0	Cullman	3	Lawrence	0	St. Clair	0
Blount	0	Dale	0	Lee	288	Shelby	0
Bullock	5	Dallas	0	Limestone	0	Sumter	0
Butler	3	Dekalb	3	Lowndes	1	Talladega	0
Calhoun	0	Elmore	0	Macon	8	Tallapoosa	5
Chambers	99	Escambia	0	Madison	0	Tuscaloosa	0
Cherokee	0	Etowah	0	Marengo	0	Walker	0
Chilton	0	Fayette	0	Marion	0	Washington	0
Choctaw	0	Franklin	0	Marshall	0	Wilcox	0
Clarke	1	Geneva	0	Mobile	2	Winston	0
Clay	0	Greene	0	Monroe	1	Unknown	0
Cleburne	0	Hale	0	Montgomery	10		
Coffee	4	Henry	1	Morgan	0		
Colbert	0	Houston	4	Perry	0		
Conecuh	1	Jackson	0	Pickens	0	TOTAL	779

**Phenix City
Headcount Enrollment by State/Territory
Fall 2005**

Alabama	779	Nevada	0
Alaska	0	New Hampshire	0
Arizona	0	New Jersey	0
Arkansas	0	New Mexico	0
California	0	New York	0
Colorado	0	North Carolina	0
Connecticut	0	North Dakota	0
Delaware	0	Ohio	1
District of Columbia	0	Oklahoma	0
Florida	1	Oregon	0
Georgia	995	Pennsylvania	0
Guam	0	Puerto Rico	0
Hawaii	0	Rhode Island	0
Idaho	0	South Carolina	0
Illinois	0	South Dakota	0

**Phenix City Campus
Course Enrollment
By Term and Academic Level
2000-2001 through Fall 2005**

Term/Year	Number of Students			% of Total Students		
	Undergraduate	Graduate	Total	Undergraduate	Graduate	Total
Fall 2000	1,285	1,754	3,039	42.28%	57.72%	100.00%
Spring 2001	1,240	1,982	3,222	38.49%	61.51%	100.00%
Summer 2001	608	1,596	2,204	27.59%	72.41%	100.00%
Fall 2001	1,309	2,012	3,321	39.42%	60.58%	100.00%
Spring 2002	1,281	2,162	3,443	37.21%	62.79%	100.00%
Summer 2002	574	1,671	2,245	25.57%	74.43%	100.00%
Fall 2002	1,286	2,082	3,368	38.18%	61.82%	100.00%
Spring 2003	1,288	2,184	3,472	37.10%	62.90%	100.00%
Summer 2003	641	1,377	2,018	31.76%	68.24%	100.00%
Fall 2003	1,542	2,125	3,667	42.05%	57.95%	100.00%
Spring 2004	1,528	2,308	3,836	39.83%	60.17%	100.00%
Summer 2004	807	1,568	2,375	33.98%	66.02%	100.00%
Fall 2004	2,005	2,614	4,619	43.41%	56.59%	100.00%
Spring 2005	2,015	2,731	4,746	42.46%	57.54%	100.00%
Summer 2005	1,076	1,757	2,833	37.98%	62.02%	100.00%
Fall 2005	2,176	2,545	4,721	46.09%	53.91%	100.00%

Fall 2005 Class Size

Undergraduate Class Size	2-9	10-19	20-29	30-39	40-49	50-99	100+
Class Sections	80	43	34	6	2	0	0
Class Subsections (Labs)	10	0	0	0	0	0	0

**Phenix City Campus
Credit Hour Production
By Term and Academic Level
2000-2001 through Fall 2005**

Term/Year	Lower Division	Number of Credit Hours				Lower Division	% of Total Credit Hours			
		Upper Division	Total Undergraduate	Graduate	Total		Upper Division	Total Undergraduate	Graduate	Total
Fall 2000	306	3,585	3,891	5,150	9,041	7.86%	92.14%	43.04%	56.96%	100.00%
			3,806							
			1,879							
			4,159							
			4,056							
			1,769							
			4,042							
			3,996							
			2,154							
			4,665							
			4,587							
			2,368							
			5,909							
			6,193							
			3,153							
			6,376							

Phenix City Campus

Phenix City Campus

Degrees Conferred by Academic Program

Acad

Phenix City Campus
Degrees Conferred by Gender and Ethnicity
Academic Year 2004-2005*

Ethnicity	<u>Associate</u>		<u>Bachelor's</u>		<u>Master's</u>		<u>Educational Specialist</u>		<u>Total</u>	
	Male	Female	Male	Female	Male	Female	Male	Female	Male	Female
Non-Resident Alien	0	0	0	0	0	0	0	0	0	0
African American	0	0	6	52	17	91	6	55	29	198
American Indian	0	0	0	0	0	0	0	0	0	0
Asian/Pacific Islander	0	0	1	1	1	0	0	0	2	1
Hispanic	0	0	0	1	1	0	0	0	1	1
Caucasian	0	0	32	71	27	94	7	57	66	222
Unknown	0	0	0	2	2	6	0	2	2	10
Total	0	0	39	127	48	191	13	114	100	432

* Note: The degrees reported were awarded between July 1, 2004 and June 30, 2005.

**Phenix City Campus
Summary of Full-Time Faculty Salaries by Rank and Gender
Fall 2005**

RANK

Source	1999	2000	2001	2002*	2003	2004	2005
Tuition and Fees	\$ 4,038.02	\$ 3,885.09	\$ 3,951.25	\$ 4,323.84	\$ 4,810.60	\$ 5,452.62	\$ 6,796.39
State Appropriations	\$ 1,033.85	\$ 1,095.85	\$ 1,092.18	\$ 1,128.51	\$ 1,156.73	\$ 1,166.65	\$ 1,211.82
Federal Grants & Contracts	\$ 301.61	\$ 290.78	\$ 377.87	\$ 396.07	\$ 553.62	\$ 803.07	\$ 1,199.06
State Grants & Contracts	\$ -	\$ -	\$ 5.28	\$ 9.47	\$ 2.57	\$ -	\$ -
Other Gifts, Grants & Contracts	\$ -	\$ 40.00	\$ 42.02	\$ -	\$ -	\$ -	\$ -

Function	1999	2000	2001	2002*	2003	2004	2005
Instruction	32.15%	33.41%	35.03%	31.55%	29.90%	29.35%	27.95%
Research				0.00%	0.00%	0.00%	0.00%
Public Service				0.00%	0.00%	0.00%	0.00%
Academic Support	6.32%	5.58%	5.77%	6.45%	5.97%	5.70%	6.25%
Athletics				0.00%	0.00%	0.00%	0.00%
Libraries	2.02%	2.17%	2.06%	1.89%	1.70%	1.44%	1.05%
Student Services	5.63%	5.45%	5.49%	5.90%	5.46%	6.83%	4.14%
Institutional Support	11.41%	13.29%	16.33%	15.18%	13.17%	14.73%	15.25%
Op. & Maint. Of Plant	3.97%	3.64%	4.04%	3.04%	3.40%	3.44%	2.88%
Depreciation				2.51%	2.38%	2.38%	1.88%
Scholarship	5.56%	6.31%	8.16%	6.38%	7.46%	9.59%	11.61%
Total Ed. & Gen. Expenses%	15.4	pen	services				

[Redacted]

[Redacted]

Function (FTE)	1999	2000	2001	2002*	2003	2004	2005
Instruction	\$ 2,254	\$ 2,212	\$ 2,284	\$ 2,190	\$ 2,005	\$ 1,754	\$ 2,215
Research	\$ -	\$ -	\$ -	\$ -	\$ -	\$ -	\$ -
Public Service	\$ -	\$ -	\$ -	\$ -	\$ -	\$ -	\$ -
Academic Support	\$ 443	\$ 370	\$ 376	\$ 448	\$ 400	\$ 341	\$ 495
Athletics	\$ -	\$ -	\$ -	\$ -	\$ -	\$ -	\$ -
Libraries	\$ 142	\$ 142	\$ 135	\$ 131	\$ 9(199()9()TJ11.214 0 Td(448)Tj92(\$)9004783710.5625305(\$	\$ 1,214	\$ 448

Troy University

Type	Awards	Disbursed	Awards	Disbursed	Awards	Disbursed	Awards	Disbursed
Pell	231	\$459,095	246	\$521,711	382	\$809,583	540	\$1,247,585
SEOG	0	\$0	0	\$0	0	\$0	0	\$0
Perkins Loans	0	\$0	0	\$0	0	\$0	4	\$9,500
Work Study	0	\$0	0	\$0	0	\$0	0	\$0
Workshop								
PLUS Loans	2	\$6,092	2	\$5,820	1	\$6,376	1	\$5,587
Stafford Loans	1,371	\$6,170,399	1,670	\$7,364,015	2,492	\$10,892,960	3,168	\$14,145,635
Private Loans	1	\$7,703	1	\$1,600				

University College Appendix

University College																	
Quick Facts																	
Fall Semester 2005																	
Student Enrollment																	
1. Headcount, Course, FTE Student Enrollment																	
	Headcount	13,188	Course	34,362	SACS FTE	10,152	ACHE FTE	6,819									
2. Full-time/Part-time Headcount																	
	Full-time Undergraduates		Part-time Undergraduates			Full-time Graduates			Part-time Graduates			Total					
	Total	4,932	37%	Total		3,786	29%	Total		2,739	21%	Total		1,731	13%	13,188	100%
3. Headcount by Classification																	
	Freshman		Sophomore		Junior		Senior		Unclassified/Other		Graduate		Total				
	Total	2,165	16%	1,314	10%	1,413	11%	3,297	25%	529	4%	4,470	34%	13,188	100%		
4. Headcount by Gender																	
	Male		Female		Total												
	Total	6,468	49%	6,720	51%	13,188	100%										
5. Headcount by Ethnicity																	
	Non-Resident Alien		African American		American Indian		Asian		Hispanic		Caucasian		Ethnicity Unknown		Total		
	Total	8	1.2%	5,181	39.3%	70	0.5%	249	1.9%	729	5.5%	6,307	47.8%	644	4.9%	13,188	101%

University Graduates										
6. Degrees Conferred - 2004-2005										
	Associate's		Bachelor's		Master's		Education Specialist		Total	
Total	297	10%	626	22%	1,918	68%	0	0%	2,841	100%
7. Number of Alumni:										
		31,819								
University Personnel										
8. Full-time Instructional Faculty										
Total	103									
9. Full-time Tenured Instructional Faculty										
Total	23									
10. Employee Analysis										
	Full-time Employees		Part-time Employees		Total Employees					
Total	333	42%	452	58%	785	100%				

University College
Summary of Headcount Enrollment
Fall 2001 through Fall 2005

Terms	Undergraduate		Graduate		Total		<u>Grand Total</u>
	Full-Time	Part-Time	Full-Time	Part-Time	Full-Time	Part-Time	
	Fall 2001	1,616	2,176	1,316	2,247	2,932	
Fall 2002	2,325	2,942	1,999	2,177	4,324	5,119	9,443
Fall 2003	3,246	2,822	1,520	2,061	4,766	4,883	9,649
Fall 2004	3,896	3,885	2,709	1,605	6,605	5,490	12,095
Fall 2005	4,932	3,786	2,739	1,731	7,671	5,517	13,188

Summary of Annual Unduplicated Headcount Enrollment
2000-2001 through 2004-2005

2000-2001	2001-2002	2002-2003	2003-2004	2004-2005
11,198	13,308	15,521	18,696	21,839

**University College
Headcount Enrollment
By Classification and Enrollment Status
Fall 2001 through Fall 2005**

Classification	Full-Time	Percent	Part-Time	Percent	Total
Fall 2001					
Freshmen	890	37.4%	1,489	62.6%	2,379
Sophomore	204	58.3%	146	41.7%	350
Junior	187	57.9%	136	42.1%	323
Senior	328	59.2%	226	40.8%	554
Unclassified	7	3.8%	177	96.2%	184
Post Baccalaureate	0	0.0%	2	100.0%	2
Graduate	1,316	36.94%	2,247	63.06%	3,563
Total	2,932	39.86%	4,423	60.14%	7,355
Fall 2002					
Freshmen	992	34.94%	1,847	65.06%	2,839
Sophomore	267	44.43%	334	55.57%	601
Junior	342	55.34%	276	44.66%	618
Senior	703	60.45%	460	39.55%	1,163
Unclassified	21	45.65%	25	54.35%	46
Post Baccalaureate	0	---	0	---	0
Graduate	1,999	47.87%	2,177	52.13%	4,176
Total	4,324	45.79%	5,119	54.21%	9,443
Fall 2003					
Freshmen	1,167	47.21%	1,305	52.79%	2,472
Sophomore	414	50.86%	400	49.14%	814
Junior	521	57.89%	379	42.11%	900
Senior	1,130	66.71%	564	33.29%	1,694
Unclassified	14	7.45%	174	92.55%	188
Post Baccalaureate	0	---	0	---	0
Graduate	1,520	42.45%	2,061	57.55%	3,581
Total	4,766	49.39%	4,883	50.61%	9,649
Fall 2004					
Freshmen	1,355	43.81%	1,738	56.19%	3,093
Sophomore	495	51.51%	466	48.49%	961
Junior	578	55.47%	464	44.53%	1,042
Senior	1,455	54.88%	1,196	45.12%	2,651
Unclassified	13	38.24%	21	61.76%	34
Post Baccalaureate	0	---	0	---	0
Graduate	2,709	62.80%	1,605	37.20%	4,314
Total	6,605	54.61%	5,490	45.39%	12,095
Fall 2005					
Freshmen	1,035	47.81%	1,130	52.19%	2,165
Sophomore	723	55.02%	591	44.98%	1,314
Junior	771	54.56%	642	45.44%	1,413
Senior	2,039	61.84%	1,258	38.16%	3,297
Unclassified	364	68.81%	165	31.19%	529
Post Baccalaureate	0	---	0	---	0
Graduate	2,739	61.28%	1,731	38.72%	4,470
Total	7,671	58.17%	5,517	41.83%	13,188

**University College
Fall Headcount Enrollment Comparison
By Ethnicity, Gender, and Academic Level
Fall 2001 through Fall 2005**

Ethnicity/Academic Level	Fall 2001			Fall 2002			Fall 2003			Fall 2004			Fall 2005		
	Male	Female	Total	Male	Female	Total	Male	Female	Total	Male	Female	Total	Male	Female	Total
<u>Non-Resident Alien</u>															
Undergraduate	0	2	2	0	1	1	0	1	1	0	0	0	5	2	7
Graduate	0	0	0	0	2	2	0	0	0	1	0	1	1	0	1
Total	0	2	2	0	3	3	0	1	1	1	0	1	6	2	8
<u>African American</u>															
Undergraduate	528	538	1,066	938	704	1,642	988	926	1,914	1,240	1,126	2,366	1,272	1,731	3,003
Graduate	433	810	1,243	508	1,098	1,606	488	1,179	1,667	537	1,481	2,018	561	1,617	2,178
Total	961	1,348	2,309	1,446	1,802	3,248	1,476	2,105	3,581	1,777	2,607	4,384	1,833	3,348	5,181
<u>American Indian</u>															
Undergraduate	10	5	15	23	8	31	26	17	43	45	20	65	36	21	57
Graduate	8	3	11	6	11	17	4	9	13	6	5	11	4	9	13
Total	18	8	26	29	19	48	30	26	56	51	25	76	40	30	70
<u>Asian/Pacific Islander</u>															
Undergraduate	42	33	75	61	26	87	62	42	104	90	56	146	101	54	155
Graduate	69	65	134	50	58	108	44	40	84	45	34	79	46	48	94
Total	111	98	209	111	84	195	106	82	188	135	90	225	147	102	249
<u>Hispanic</u>															
Undergraduate	153	68	221	310	100	410	291	114	405	429	143	572	403	168	571
Graduate	66	56	122	84	61	145	68	62	130	81	57	138	80	78	158
Total	219	124	343	394	161	555	359	176	535	510	200	710	483	246	729
<u>Caucasian</u>															
Undergraduate	1,158	774	1,932	1,909	684	2,593	2,087	964	3,051	2,880	1,148	4,028	2,856	1,545	4,401
Graduate	809	785	1,594	915	903	1,818	699	791	1,490	736	1,129	1,865	733	1,173	1,906
Total															
Total															

University College

Headcount Enrollment by College and Academic Level

Fall 2005

Colle

Fall 2005

	Chemistry	1	0
	Childhood Studies	1	0
	Collaborative Teacher Education	11	1
	Community Psychology	0	143
	Computer Science	529	0
	Counseling Psychology	0	375
	Criminal Justice	1,639	101
	Design, Technology & Industry	1	0
	Early Childhood Education	0	2
	Educational Administration	0	1
	Educational Leadership	0	3
	Elementary Education	156	23
	EMBA-General Management	0	82
	EMBA-Healthcare Management	0	2
	EMBA-Information Systems	0	13
	English	3	0
	English Education	6	1
	Environmental Analysis & Management	0	1
	Environmental Science	2	0
	Finance	13	0
	General Business	407	0
	General Education	2,041	0
	Geomatics	2	0
	Gifted Education	0	1
	Health & Physical Education - Comprehensive	4	0
	History	2	0
	History Education	1	2
	Human Resources Management	40	248
	Human Services	29	0

Journalism	5	0
Management	1,075	1,005
Marketing	34	0
Master of Education	0	1,118
Math Education	5	1
Mathematics	1	0
MBA	0	138
MBA-Accounting	0	2
MBA-Information Systems	0	26
Music Education - Instrumental	4	0
Music Education - Vocal	1	0
Nursing	185	4
Personnel & Human Services Counseling	0	1
Physical Education	1	0
Political Science	148	0
Post Secondary Education	0	372
Professional Studies	1	0
Psychology	553	0
Public Administration	0	423
Rehabilitation	4	0
Rehabilitation Counseling	0	1
Resources Management	649	0
Resources & Technology Management	119	0
Risk Management & Insurance	7	0
School Counseling	0	4
School Psychometry	0	1
Science Education	2	1

University College
Permanent Residence By Alabama Counties
Fall 2005

Autauga	19	Coosa	2	Jefferson	47	Pike	142
Baldwin	41	Covington	32	Lamar	1	Randolph	2
Barbour	21	Crenshaw	18	Lauderdale	2	Russell	220
Bibb	1	Cullman	3	Lawrence	1	St. Clair	3
Blount	1	Dale	68	Lee	179	Shelby	21
Bullock	8	Dallas	0	Limestone	1	Sumter	0
Butler	18	Dekalb	1	Lowndes	4	Talladega	3
Calhoun	4	Elmore	49	Macon	9	Tallapoosa	6
Chambers	32	Escambia	6	Madison	23	Tuscaloosa	10
Cherokee	0	Etowah	2	Marengo	1	Walker	1
Chilton	8	Fayette	1	Marion	2	Washington	2
Choctaw	0	Franklin	0	Marshall	2	Wilcox	0
Clarke	6	Geneva	15	Mobile	48	Winston	0
Clay	2	Greene	0	Monroe	6	Unknown	2
Cleburne	1	Hale	0	Montgomery	144		
Coffee	41	Henry	8	Morgan	3		
Colbert	0	Houston	56	Perry	1		
Conecuh	9	Jackson	3	Pickens	1	TOTAL	1,363

Alabama	1,363	Nevada	2
Alaska	60	New Hampshire	3
Arizona	66	New Jersey	20
Arkansas	12	New Mexico	77
California	95	New York	254
Colorado	220	North Carolina	555
Connecticut	5	North Dakota	2
Delaware	2	Ohio	32
District of Columbia	8	Oklahoma	84
Florida	2,139	Oregon	4
Georgia	4,427	Pennsylvania	24
Guam	7	Puerto Rico	4
Hawaii	97	Rhode Island	0
Idaho	5	South Carolina	348
Illinois	28	South Dakota	0
Indiana	22	Tennessee	179
Iowa	5	Texas	381
Kansas	44	Utah	6
Kentucky	218	Vermont	3
Louisiana	79	Virginia	865
Maine	3	Washington	223
Maryland	109		

**University College
Headcount Enrollment
By Foreign Countries
Fall 2005**

China	1	Saudi Arabia	1
India	2	South Korea	1
Morocco	1	Turkey	1
Pakistan	1		
		TOTAL	8

Source: Office of Institutional Research, Planning, and Effectiveness

**University College
Course Enrollment
By Term and Academic Level
2000-2001 through Fall 2005**

Term/Year	Number of Students			% of Total Students		
	Undergraduate	Graduate	Total	Undergraduate	Graduate	Total
Fall 2000	4,242	8,156	12,398	34.22%	65.78%	100.00%
Spring 2001	10,166	8,679	18,845	53.95%	46.05%	100.00%
Summer 2001	3,594	3,764	7,358	48.84%	51.16%	100.00%
Fall 2001	9,735	8,226	17,961	54.20%	45.80%	100.00%
Spring 2002	10,442	9,001	19,443	53.71%	46.29%	100.00%
Summer 2002	5,032	4,086	9,118	55.19%	44.81%	100.00%
Fall 2002	13,946	8,945	22,891	60.94%	39.06%	100.00%
Spring 2003	14,506	8,360	22,866	63.48%	36.52%	100.00%
Summer 2003	17,493	7,358	24,851	69.99%	30.01%	100.00%
Fall 2003	18,594	7,358	25,952	71.69%	28.31%	100.00%
Spring 2004	9,472	7,358	16,830	56.31%	43.69%	100.00%
Summer 2004	22,459	7,358	29,817	75.32%	24.68%	100.00%
Fall 2004	23,551	7,358	30,909	76.23%	23.77%	100.00%
Spring 2005	11,110	7,358	18,468	60.21%	39.79%	100.00%
Fall 2005	23,679	7,358	31,037	76.30%	23.70%	100.00%

ll 2000

0 g0 g0.00011063094(j0 g-0.00Tj557ring 2002)Tj/CS0 cs 0.2 0.2 0.6c 5.681 0 Td(100.00%)Tj-0.06012 Tw

**University College
Credit Hour Production
By Term and Academic Level
2000-2001 through Fall 2005**

Term/Year	Number of Credit Hours		% of Total Credit Hours
	Lower Division	Upper Division	

**University College
ACHE Full-Time Equivalency (Student FTE)*
By Term and Academic Level
2000-2001 through Fall 2005**

Term/Year	Lower	FTE	% of FTE
------------------	-------	-----	----------

	Male	Female	TOTAL	Male	Female	TOTAL	Male	Female	TOTAL	Male	Female	TOTAL	Male	Female	TOTAL
APPLICATIONS RECEIVED															

University Collge

Degrees Conferred b De

**University College
Degrees Conferred by College
2000-01 through 2004-2005***

Year & College	Associate	Bachelor's	Master's	Educational Specialist	Total
2000-2001					
Arts & Sciences	77	233	478	0	788
Business	73	203	652	0	928
Communication & Fine Arts	0	0	0	0	0
Education	0	29	370	0	399
Health & Human Services	0	3	0	0	3
Total	150	468	1,500	0	2,118
2001-2002					
Arts & Sciences	171	183	623	0	977
Business	19	190	712	0	921
Communication & Fine Arts	0	0	0	0	0
Education	0	31	372	0	403
Health & Human Services	0	0	0	0	0
Total	190	404	1,707	0	2,301
2002-2003					
Arts & Sciences	153	200	345	0	698
Business	16	179	813	0	1,008
Communication & Fine Arts	0	0	0	0	0
Education	0	29	588	0	617
Health & Human Services	0	0	0	0	0
Total	169	408	1,746	0	2,323
2003-2004					
Arts & Sciences	259	260	285	0	804
Business	13	194	805	0	1,012
Communication & Fine Arts	0	0	0	0	0
Education	0	36	821	0	857
Health & Human Services	0	1	0	0	1
Total	272	491	1,911	0	2,674
2004-2005					
Arts & Sciences	275	302	206	0	783
Business	22	238	734	0	994
Communication & Fine Arts	0	0	0	0	0
Education	0	86	976	0	1,062
Health & Human Services	0	0	2	0	2
Total	297	626	1,918	0	2,841

* Note: The degrees reported were awarded between July 1, 2004 and June 30, 2005.

University College
Summary of Full-Time Faculty Salaries by Rank and Gender
Fall 2005

RANK	Men	Women	Men	Women	Men	Women	Men	Women
Professor	0	0	\$0	\$0	3	1	\$74,066	\$72,072

	Full-Time	Part-Time	Full-Time	Part-Time	Full-Time	Part-Time
Executive/Administrative	12	0	10	0	22	0
Faculty	71	273	32	161	103	434
Other Professional	44	0	118	1	162	1
Graduate Assistants	0	0	0	0	0	0
Secretarial/Clerical	2	2	39	9	41	11
Technical						

Source	1999	2000	2001	2002*	2003	2004	2005
Tuition and Fees	\$ 16,913.69	\$ 20,849.54	\$ 22,223.89	\$ 28,095.64	\$ 36,314.96	\$ 40,110.58	\$ 50,156.97
State Appropriations	\$ -	\$ -	\$ -	\$ -	\$ -	\$ -	\$ -
Federal Grants & Contracts	\$ 1,321.57	\$ 1,138.61	\$ 1,495.95	\$ 1,502.30	\$ 2,244.09	2,961.87	

Troy University
University College
Unrestricted and Restricted Current Funds Expenditures
As a Percentage of Totals
For the Years Ended September 30, 1999-2005

Function	1999	2000	2001	2002*	2003	2004	2005
Instruction	42.38%	39.93%	40.74%	39.28%	34.81%	38.91%	40.85%
Research	0.04%			0.00%	0.00%	0.00%	0.00%
Public Service				0.00%	0.00%	0.00%	0.00%
Academic Support	5.61%	7.29%	7.63%	9.89%	9.87%	10.34%	8.81%
Athletics				0.00%	0.00%	0.00%	0.00%
Libraries	2.25%	1.30%	1.66%	1.14%	1.14%	1.08%	1.20%
Student Services	3.77%	2.97%	2.90%	0.58%	1.74%	1.77%	0.72%
Institutional Support	30.39%	28.70%	30.83%	33.52%	32.76%	33.70%	34.25%
Op. & Maint. Of Plant				0.00%	0.00%	0.00%	0.00%
Depreciation				0.14%	0.05%	0.11%	0.11%
Scholarship	5.97%	3.45%	4.16%	3.90%	3.48%	4.22%	4.45%
Total Ed. & Gen. Expenses	90.42%	83.63%	87.92%	89.40%	83.86%	90.13%	90.38%
Interest Expense				9.24%	0.00%	0.00%	-0.02%
Transfers to Unexpended Plant				1.36%	15.15%	9.21%	9.04%
Mandatory Transfers				0.00%	0.00%	0.00%	0.00%
Nonmandatory Transfers	3.25%	12.65%	10.14%	0.00%	0.00%	0.00%	0.00%
Total Educational & General	93.67%	96.28%	98.05%	98.64%	99.01%	99.33%	99.41%
Auxiliary Enterprises (net)	6.33%	3.53%	1.95%	1.36%	0.99%	0.67%	0.59%
Mandatory Transfers				0.00%	0.00%	0.00%	0.00%
Nonmandatory Transfers		0.20%		0.00%	0.00%	0.00%	0.00%
Total Expenditures & Transfers	100.00%	100.00%	100.00%	100.00%	100.00%	100.00%	100.000.00%

0.042144semented

Source: Office of Accounting Services

*Note: Government Accounting Standards Board (GASB) requirements were impl

Troy University

Type	Awards	Disbursed	Awards	Disbursed	Awards	Disbursed	Awards	Disbursed
Pell	542	\$991,943	714	\$1,142,276	1,059	\$1,803,603	1,437	\$1,512,781
SEOG	4	\$5,641	0	\$0	0	\$0	-9	-\$20,000
Perkins Loans	0	\$0	0	\$0	0	\$0	-11	-\$35,000
Work Study	0	\$0	0	\$0	0	\$0	0	\$0
Workshop	0	\$0	0	\$0	0	\$0	0	\$0
PLUS Loans	1	\$2,784	1	\$2,546	0	\$0	-19	-\$45,310
Stafford Loans	3,677	\$13,987,383	6,555	\$22,657,236	8,728	\$34,621,911	11,599	\$46,818,531
Private Loans	13	\$73,396	7	\$46,463	12	\$81,922	16	\$105,961
FL/AL State Grants	26	\$16,710	23	\$11,061	53	\$17,587	40	\$18,558
University Scholarships and Grants	75	\$4,120	42	\$3,420	22	\$0	-3	-\$1,485
University Athlete Scholarships and Grants	0	\$0	0	\$0	0	\$0	0	\$0
University Non-Athlete Grant in Aid	0	\$0	0	\$0	0	\$0	0	\$0
Other Scholarships	41	\$57,378	43	\$43,056	2,732	\$3,836,489	0	\$0
Employee Benefits	0	\$0	0	\$0	0	\$6,661	10	\$14,408
Veterans Benefits	299	\$1,775,917	357	\$2,557,577	510	\$3,593,126	696	\$6,022,908
Total	4,678	\$16,915,272	7,742	\$26,463,635	13,116	\$43,961,298	13,756	\$54,391,352

Undergrad
 Uni3.87,ii3.87,ii GadB2

\$1,775,917 Private Lo8sityene75 05-487,iiete Grant in\$1,775,91

**Dothan Campus
Quick Facts
Fall Semester 2005**

Student Enrollment

1. Headcount, Course, FTE Student Enrollment

	Headcount	Course	SACS FTE	ACHE FTE
Total	1,917	5,825	1,417	1,187

2. Full-time/Part-time Headcount

Full-time Undergraduates		Part-time Undergraduates		Full-time Graduates		Part-time Graduates		Total					
Total	771	40%	Total	741	39%	Total	92	5%	Total	313	16%	1,917	100%

3. Headcount by Classification

	Freshman	Sophomore	Junior	Senior	Unclassified/Other	Graduate	Total
Total	264	233	353	660	2	405	1,917
	14%	12%	18%	34%	0%	21%	100%

4. Headcount by Gender

	Male	Female	Total
Total	594	1,323	1,917
	31%	69%	100%

5. Headcount by Ethnicity

	Non-Resident Alien	African American	American Indian	Asian	Hispanic	Caucasian	Ethnicity Unknown	Total
Total	0	396	18	31	30	1,396	46	1,917
	0.0%	20.7%	0.9%	1.6%	1.6%	72.8%	2.4%	100%

University Graduates									
6. Degrees Conferred - 2004-2005									
	Associate's		Bachelor's		Master's		Education Specialist		Total
Total	24	6%	254	64%	106	27%	10	3%	394
									100%
7. Number of Alumni:		13,722							
University Personnel									
8. Full-time Instructional Faculty									
Total	54								
9. Full-time Tenured Instructional Faculty									
Total	27								
10. Employee Analysis									
	Full-time Employees		Part-time Employees		Total Employees				
Total	123	61%	80	39%	203	100%			

ALABAMA COMMISSION ON HIGHER EDUCATION

TUITION AND FEE SCHEDULE 2005-2006

RESIDENT

Annual

NON-RESIDENT

A

Dothan Campus
Summary of Headcount Enrollment
Fall 2001 through Fall 2005

<u>Undergraduate</u>		<u>Graduate</u>		<u>Total</u>		<u>Grand Total</u>
<u>Full-Time</u>	<u>Part-Time</u>	<u>Full-Time</u>	<u>Part-Time</u>	<u>Full-Time</u>	<u>Part-Time</u>	
668	831	76	280	744	1111	1855
737	801	82	271	819	1072	1891
792	789	72	246	864	1035	1899
752	786	90	266	842	1052	1894
771	741	92	313	863	1054	1917

Summary of Annual Unduplicated Headcount Enrollment
2000-2001 through 2004-2005

2000-2001	2001-2002	2002-2003	2003-2004	2004-2005
3,134	2,730	2,662	2,678	2,667

**Dothan Campus
Headcount Enrollment by Student Age Group,
Enrollment Status, and Academic Level
Fall 2005**

Age Group	Full-Time		Part-Time		Total		Total %	
	Undergraduate	Graduate	Undergraduate	Graduate	Undergraduate	Graduate	Undergraduate	Graduate
Under 18	0	0	0	0	0	0	0.00%	0.00%
18-19	77	0	24	0	101	0	7.00%	0.00%
20-21	125	3	51	0	176	3	12.00%	1.00%
22-24	193	11	151	22	344	33	23.00%	8.00%
25-29	137	21	164	86	301	107	20.00%	26.00%
30-34	92	25	110	60	202	85	13.00%	21.00%
35-39	54	13	90	44	144	57	10.00%	14.00%
40-49	73	18	115	67	188	85	12.00%	21.00%
50-64	17	1	34	34	51	35	3.00%	9.00%
65 & Over	3	0	1	0	4	0	0.00%	0.00%
Age Unknown	0	0	0	0	0	0	0.00%	0.00%
Total	771	92	740	313	1511	405	100.00%	100.00%

Average Age

	1st-Time Freshmen	Undergraduate			Graduate		Total Average
		Full-Time	Part-Time	Undergraduate Average	Full-Time	Part-Time	
Male	23	27	31	27	32	37	33
Female	24	27.5	31	27	32	36	32
Total Average	23	27	31	27	32	36	32

Dothan Campus
Headcount Enrollment by College and Academic Level
Fall 2001 through Fall 2005

College/Academic Level	Fall 2001		Fall 2002		Fall 2003		Fall 2004		Fall 2005	
	#	%	#	%	#	%	#	%	#	%
<u>Arts & Sciences</u>										
Undergraduate	501	27.0%	520	27.5%	567	29.9%	572	30.2%	614	32.0%
Graduate	44	2.4%	35	1.9%	19	1.0%	25	1.3%	31	1.6%
Total	545	29.4%	555	29.3%	586	30.9%	597	31.5%		

**Dothan Campus
Headcount Enrollment
BY Major & Academic Level
Fall 2001 through Fall 2005**

Major	Fall 2001		Fall 2002		Fall 2003		Fall 2004		Fall 2005	
	Undergraduate	Graduate	Undergraduate	Graduate	Undergraduate	Graduate	Undergraduate	Graduate	Undergraduate	Graduate
ACS	0	0	0	0	0	0	0	0	24	0
ACT									54	13
ADMIN										1
AHY - American History	5	0	10	0	7	0	10	0	7	
AIS - Accounting Information Science	10	0	12	0	7	0	7	0	7	0
ART									2	0
ARTP									1	
ASGE - General Education	10	0	7	0	0	0	0	0		
BACT - Accounting	110	0	141	0	140	0	135	0	100	
BCIS - Business CIS	37	0	27	0	32	0	0	0		
BECO - Economics	3	0	2	0	2	0	4	0	2	
BFIN - Finance	37	0	51	0	36	0	32	0	32	
BGEN - General Business	104	0	103	0	99	0	89	0	62	
BIO - Biology	58	0	69	0	72	0	72	0	72	
BIOE - Biology Education	10	2	10	1	10	3	15	4		1
BIOED										1
BIOGN									2	
BIOMT									1	
BMGT - Management	65	0	79	0	101	0	106	17	72	24
BMIS - Management Information Science	30	0	26	0	18	0	16	0	19	
BMKT - Marketing	41	0	35	0	44	0	60	0	43	
BUS									6	
BUSIR									1	
CHM - Chemistry	0	0	0	0	8	0	21	0	22	
CIS - Computer Information Science	177	0	144	0	155	0	162	0	117	
CISWE									8	0

EDADG										8
EDG -	0	0	0	0	0	0	0	5		7
EDL - School Administration	0	45	0	67	0	49	0	48		42
EED									47	8
EEE - Dual Program (ECE & ELED)	14	0	15	0	26	0	27	0	13	
ELE									8	
ELEA - ACA: Elementary Education	0	6	0	8	0	8	0	8		6
ELED - Elementary Education	118	25	118	32	124	30	109	35	85	23
ELEEA										1
ENG - English	23	0	23	0	16	0	25	0	54	
ENGLA - English Language & Arts Educati	24	13	30	8	38	5	37	7	2	6
FDED - Foundations of Education	0	8	0	11	0	8	0	4		1
FIN									13	
GBGEN									18	
GSBIO									4	
GSCI - General Science	1	0	1	0	1	0	1	0	8	
HIS - History	2	0	2	0	4	0	3	0		
HISE - History Education	19	5	21	1	20	2	20	3	7	4
HY									6	
HYED										3
HYEDA									2	
HYEDG									2	
INTS - International Studies	0	9	0	6	0	5	0	6		7
IS									1	1
JRN									2	
MBA	0	40	0	38	0	44	0	50	4	42
MBA2										2
MBAA									1	
MCPSC										7
MCPSS										1
MEDGS										2
MEDHY										2
MEDIT										1
MGT									26	
MGTLO										2
MIS									1	
MKT									25	
MSHRM - Human Res. Management	0	27	0	31	0	32	0	26		29
MSIRG										1
MTH - Mathematics	3	0	7	0	4	0	11	0	45	
MTHE - Math Education	27	9	34	7	34	10	29	11		5
MTHEA									1	
MTHED										1
MUS									1	
ND									55	23
NM										8
NSG2									2	
NSG4									12	
PSE									1	
PSYS - Physical Science	12	0	18	0	17	0	11	0	2	

Dothan Campus
Permanent Residence By Alabama Counties
Fall 2005

Autauga	0	Coosa	0	Lamar	0	Russell	2
Baldwin	1	Covington	38	Lauderdale	0	St. Clair	0
Barbour	39	Crenshaw	0	Lawrence	0	Shelby	0
Bibb	0	Cullman	1	Lee	5	Sumter	0
Butler	2	Dale	377	Limestone	0	Talladega	1

**DOTHAN CAMPUS
 HEADCOUNT ENROLLMENT BY STATE/TERRITORY
 FALL 2005**

Alabama	1,759
California	1
Florida	64
Georgia	81
Missouri	1
New Jersey	1
New Mexico	1
North Carolina	2
Ohio	1
Tennessee	1
Virginia	2
Washington	1
Other/No Code*	2
Total	1,917

* Note: 2 were in the military.

Source: Office of Institutional Research, Planning and Effectiveness

**Course Enrollment
Dothan Campus
By Term and Academic Level
2001-2002 through Fall 2005**

Term/Year	Number of Students			% of Total Students		
	Undergraduate	Graduate	Total	Undergraduate	Graduate	Total
Fall 2000	5,505	639	6144	89.6%	10.4%	100.0%
Spring 2001	5,270	687	5957	88.5%	11.5%	100.0%
Summer 2001	2,540	571	3111	81.6%	18.4%	100.0%
Fall 2001	5,083	628	5711	89.0%	11.0%	100.0%
Spring 2002	5,234	734	5968	87.7%	12.3%	100.0%
Summer 2002	2,557	589	3146	81.3%	18.7%	100.0%
Fall 2002	5,035	673	5708	88.2%	11.8%	100.0%
Spring 2003	4,795	672	5467	87.7%	12.3%	100.0%
Summer 2003	2,657	547	3204	82.9%	17.1%	100.0%
Fall 2003	5,329	631	5960	89.4%	10.6%	100.0%
Spring 2004	5,015	713	5728	87.6%	12.4%	100.0%
Summer 2004	2,511	608	3119	80.5%	19.5%	100.0%
Fall 2004	5,061	708	5769	87.7%	12.3%	100.0%
Spring 2005	4893	757	5650	86.6%	13.4%	100.0%
Summer 2005	2277	586	2863	79.5%	20.5%	100.0%
Fall 2005	5104	721	5825	87.6%	12.4%	100.0%

Fall 2005 Class Size

Undergraduate Class Size	2-9	10-19	20-29	30-39	40-49	50-99	100+
Class Sections	73	114	83	19	1	0	0
Class Subsections (Labs)	5	11	5	0	0	0	0
Graduate Class Size	2-9	10-19	20-29	30-39	40-49	50-99	100+
Class Sections	41	16	10	2	0	0	0
Class Subsections (Labs)	0	1	0	0	0	0	0

Fall 2005 Student to Faculty Ratio: 15:01

**Dothan Campus
Credit Hour Production
By Term and Academic Level
2001-2002 through Fall 2005**

Term/Year	Lower Division	Number of Credit Hours		Total	% of Total Credit Hours	
		Upper Division	Undergraduate		Graduate	Professional
2001-2002	10,000	10,000	20,000	100%	0%	0%
2002-2003	10,000	10,000	20,000	100%	0%	0%
2003-2004	10,000	10,000	20,000	100%	0%	0%
2004-2005	10,000	10,000	20,000	100%	0%	0%
Fall 2005	10,000	10,000	20,000	100%	0%	0%

DOTHAN CAMPUS
 APPLICATIONS RECEIVED, ACCEPTED, AND ENROLLED
 FALL 2001 THROUGH FALL 2005

													FALL 2005		
	Male	Female	TOTAL	Male	Female	TOTAL	Male	Female	TOTAL	Male	Female	TOTAL	Male	Female	TOTAL
APPLICATIONS RECEIVED															
Freshmen	43	75	118	36	76	112	42	97	139	59	117	176	66	119	185
Transfers	192	375	567	177	419	596	221	430	651	216	464	680	114	287	401
First-Time															
Graduates	33	107	140	42	142	184	35	150	185	43	139	182	41	100	141
TOTAL	268	557	825	255	637	892	298	677	975	318	720	1,038	221	506	727
ACCEPTED															
Freshmen	26	45	71	26	51	77	28	69	97	40	77	117	52	84	136
Transfers	173	331	504	134	266	400	170	285	455	216	463	679	90	211	301
First-Time															
Graduates	26	85	111	26	99	125	27	112	139	39	131	170	29	81	110
TOTAL	225	461	686	186	416	602	225	466	691	295	671	966	171	376	547
ENROLLED															
Freshmen	19	31	50	26	45	71	23	54	77	30	52	82	33	63	96
Transfers	116	228	344	117	230	347	147	252	399	116	260	376	81	196	277
First-Time															
Graduates	26	70	96	15	78	93	14	80	94	21	85	106	36	90	126
TOTAL	161	329	490	158	353	511	184	386	570	167	397	564	150	349	499

DOTHAN CAMPUS
 ACT NORMS
 ENROLLED FIRST-TIME FIRST-YEAR FRESHMEN

Fall	English	Math	Reading	Science Reasoning	Composite
2005	21.8	20.9	21.6	21.0	21.5

Source: [ACT Class Profile](#) in Office of Institutional Research, Planning, and Effectiveness



Planned Educational Major	Nct	Avg ACT Comp	Pct with Core Courses	Pct Minority	Pct Scoring 28+	Pct in Top Qtr in HS	ACT 1st Choice College	ACT 2nd Choice College
Business & Management	14	0	29	0	0	7	22.1	
Engineering	33	0	20	0	0	5	22.0	
Community & Personal Services	33	0	33	67	0	3	18.3	
Communications & Community	50	0	20	0	0	2	10.0	

at least 3 years of Mathematics.

Average ACT scores by Core Curriculum (Core or more is defined as at least 4 years of English, Social Sciences, and Natural Sciences)

	Math	Reading	Science	Composite	Group	Net	English
5	21.3		21.2	21.7	Core or more	30	22.1
7	22.2		20.6	21.1	Less than core	17	21.4
9	21.6		21.0	21.5	Total Group	47	21.8

Average ACT Scores by High School Rank

Group	Nct	English	Math	Reading	Science	Composite
Top Quarter	23	23.6	22.1	22.5	22.1	22.8
Second Quarter	12	19.0	18.8	18.5	18.0	18.8
Third Quarter	0	0.0	0.0	0.0	0.0	0.0
Bottom Quarter	1	17.0	15.0	16.0	10.0	17.0

ACT CLASS PROFILE REPORT

FRESHMAN CLASS 2005 - 2006

TROY UNIVERSITY
TROY, AL

Code 0015

Summary of ACT Score Averages and Standard Deviations

2005 Norms	Mstr		Score		Total Received		Enrolled		Non-Enrolled		2005 National Avg.	
	Avg.	S.D.	Avg.	S.D.	Avg.	S.D.	Avg.	S.D.	Avg.	S.D.		
10.6	2.3	19.8	4.8	21.8	4.7	18.5	4.7	21.3	5.6	21.0	5.3	English
10.6	2.3	19.8	4.8	21.8	4.7	18.5	4.7	21.3	5.6	21.0	5.3	Mathematics
10.6	2.3	19.8	4.8	21.8	4.7	18.5	4.7	21.3	5.6	21.0	5.3	Algebra/Coord Geometry
10.6	2.3	19.8	4.8	21.8	4.7	18.5	4.7	21.3	5.6	21.0	5.3	Plane Geom/Trig
10.6	2.3	19.8	4.8	21.8	4.7	18.5	4.7	21.3	5.6	21.0	5.3	Reading
10.6	2.3	19.8	4.8	21.8	4.7	18.5	4.7	21.3	5.6	21.0	5.3	Social Studies/Sci
10.6	2.3	19.8	4.8	21.8	4.7	18.5	4.7	21.3	5.6	21.0	5.3	Science
10.6	2.3	19.8	4.8	21.8	4.7	18.5	4.7	21.3	5.6	21.0	5.3	Composite
15.3	3.0	18.6	3.6	21.5	2.9	18.7	3.6	21.7	4.7	21.6	4.3	ACT Quartile Values:
15.3	3.0	18.6	3.6	21.5	2.9	18.7	3.6	21.7	4.7	21.6	4.3	English 01 (25th percentile)

**GRADUATION RATES
STUDENT BODY AND STUDENT ATHLETES
Dothan CAMPUS
FRESHMEN ENTERING FALL 1995 THROUGH FALL 1999**

The Federal Student-Right-To-Know law requires that institutions assess and report student retention and completion rates to the public. Monitoring retention and completion rates over time can help assess the effectiveness of both academic and student life programs as well as innovative programs such as the first year experience program aimed at increasing freshmen retention. The graduation rate as established by the United States Department of Education to meet current Student-Right-To-Know requirements calls for the Cohort group to be those first-time, full-time freshmen students who enrolled at the University during Summer or Fall six years prior to the reporting year and graduated before Fall of the reporting year.

Report for 2002 (Cohort Graduates through Summer 2001)

FALL 1995 COHORT

TOTAL OVERALL GRADUATION RATE FOR ALL STUDENTS:	11%
TOTAL OVERALL GRADUATION RATE FOR ATHLETES:	NA

Report for 2003 (Cohort Graduates through Summer 2002)

FALL 1996 COHORT

TOTAL OVERALL GRADUATION RATE FOR ALL STUDENTS:	31%
TOTAL OVERALL GRADUATION RATE FOR ATHLETES:	NA

Report for 2004 (Cohort Graduates through Summer 2003)

FALL 1997 COHORT

TOTAL OVERALL GRADUATION RATE FOR ALL STUDENTS:	17%
TOTAL OVERALL GRADUATION RATE FOR ATHLETES:	NA

Report for 2005 (Cohort Graduates through Summer 2004)

FALL 1998 COHORT

TOTAL OVERALL GRADUATION RATE FOR ALL STUDENTS:	23%
TOTAL OVERALL GRADUATION RATE FOR ATHLETES:	NA

Report for 2006 (Cohort Graduates through Summer 2005)

FALL 1999 COHORT

TOTAL OVERALL GRADUATION RATE FOR ALL STUDENTS:	37%
TOTAL OVERALL GRADUATION RATE FOR ATHLETES:	NA

Dothan Campus
Degrees Conferred by Academic Program
Academic Year 2004-2005*

CIP Code	Academic Program	Associate	Bachelor's	Master's	Educational Specialist	Total
11.0101	Computer & Information Sciences	0	31			31
13.0499	Education Administration & Supervision, Other			15	10	25
13.0901	Social/Philosophical Foundations of Education			5		5
13.1202	Elementary Teacher Education		29	15		44
13.1210	Early Childhood Teacher Education		4	6		10
13.1205	Secondary Education		22	15		37
23.0101	English Language & Literature		7			7
24.0199	Lib Art & Sci, Gen Studies & Hum., Other	24				24
26.0101	Biology, General		5			5
27.0101	Mathematics		1			1
42.0101	Psychology, General		23			23
42.0401	Community Psychology			12		12
43.0104	Criminal Justice Studies		22			22
45.0101	Social Sciences, General		3			3
45.0901	International Relations & Affairs			2		2
45.1101	Sociology		8			8

**Dothan Campus
Degrees Conferred by College
2000-01 through 2004-2005***

Year & College	Associate	Bachelor's	Master's	Educational Specialist	Total
2000-2001					
Arts & Sciences	26	78	0	0	104
Business	0	146	37	0	183
Communication & Fine Arts	0	0	0	0	0
Education	0	85	80	12	177
Health & Human Services	0	0	0	0	0
Total	26	309	117	12	464
2001-2002					
Arts & Sciences	31	70	3	0	104
Business	0	151	38	0	189
Communication & Fine Arts	0	0	0	0	0
Education	0	67	76	8	151
Health & Human Services	0	0	0	0	0
Total	31	288	117	8	444
2002-2003					
Arts & Sciences	23	78	3	0	104
Business	0	137	38	0	175
Communication & Fine Arts	0	0	0	0	0
Education	0	77	88	10	175
Health & Human Services	0	0	0	0	0
Total	23	292	129	10	454
2003-2004					
Arts & Sciences	37	109	1	0	147
Business	0	103	30	0	133
Communication & Fine Arts	0	0	0	0	0
Education	0	77	64	18	159
Health & Human Services	0	0	0	0	0
Total	37	289	95	18	878
2004-2005					
Arts & Sciences	24	105	2	0	131
Business	0	94	36	0	130
Communication & Fine Arts	0	0	0	0	0
Education	0	55	68	10	133

Dothan Campus
Degrees Conferred by Gender and Ethnicity
Academic Year 2004-2005*

Ethnicity	<u>Associate</u>		<u>Bachelor's</u>		<u>Master's</u>		<u>Ed Specializ</u>		<u>Total</u>	
	Female	Male	Female	Male	Female	Male	Female	Male	Female	Male
Non-Resident Alien	0	0	0	0	0	0	0	0	0	0
African American	9	3	27	7	15	1	1		52	11
American Indian	0	0	3	1	0	0	0	0	3	1
Asian/Pacific Islander	1	0	2	1	0	0	0	0	3	1
Hispanic	0	1	4	1	1	1	0	0	5	3
Caucasian	6	3	129	75	64	24	5	4	204	106
Unknown	1	0	3	1	0	0	0	0	4	1
Total	17	7	168	86	80	26	6	4	271	123

* Note: The degrees reported were awarded between July 1, 2004 and June 30, 2005.

**Dothan Campus
Distribution of Full-Time Instructional Faculty
By College, Highest Degree, and Gender
Fall 2005**

College	Doctorate		Master's		Bachelor's		Other		Total		
	Men	Women	Men	Women	Men	Women	Men	Women	Men	Women	Total
Arts and Sciences	16	4	6	2	0	0	0	0	22	6	28
Business	7	3	1	0	0	0	1	0	9	3	12
Communication & Fine Arts	0	0	0	0	0	0	0	0	0	0	0
Education	6	4	0	4	0	0	0	0	6	8	14
Health & Human Services	0	0	0	0	0	0	0	0	0	0	0
Library	0	0	0	0	0	0	0	0	0	0	0
TOTAL	29	11	7	6	0	0	1	0	37	17	54

Source: Office of Institutional Research, Planning and Effectiveness

Note: Professional librarians hold academic rank and tenure; however, no courses in Library Science are offered.

**Dothan Campus
Full-Time Tenured Instructional Faculty
By College, Highest Degree, and Gender
Fall 2005**

College	Doctorate		Master's		Bachelor's		Other		Total		
	Men	Women	Men	Women	Men	Women	Men	Women	Men	Women	Total
Arts and Sciences	11	4	1	0	0	0	0	0	12	4	16
Business	7	1	0	0	0	0	0	0	7	1	8
Communication & Fine Arts	0	0	0	0	0	0	0	0	0	0	0
Education	2	1	0	0	0	0	0	0	2	1	3
Health & Human Services	0	0	0	0	0	0	0	0	0	0	0
Library	0	0	0	0	0	0	0	0	0	0	0
TOTAL	20	6	1	0	0	0	0	0	21	6	27

Source: Office of Institutional Research, Planning and Effectiveness

Note: Professional librarians hold academic rank and tenure; however, no courses in Library Science are offered.

**Dothan Campus
Employee Analysis
Fall 2005**

	Men		Women		Total	
	Full-Time	Part-Time	Full-Time	Part-Time	Full-Time	Part-Time
Executive/Administrative	5	0	8	0	13	0
Faculty	37	24	17	36	54	60
Other Professional	11	0	13	0	24	0
Graduate Assistants	0	0	0	0	0	0
Secretarial/Clerical	1	3	25	12	26	15
Technical	1	1	0	3	1	4
Skilled Craft	0	0	0	0	0	0
Service/Maintenance	3	1	2	0	5	1
Total	58	29	65	51	123	80

Source: Office of Institutional Research, Planning and Effectiveness

**Troy University
Dothan Campus
Unrestricted and Restricted Current Funds
Revenues by Source (in thousands)
For the Years Ended September 30, 2005**

Source	2005
Tuition and Fees	\$ 7,067.48
State Appropriations	\$ 6,195.50
Federal Grants & Contracts	\$ 2,891.75
State Grants & Contracts	\$ (78.48)
Other Gifts, Grants & Contracts	\$ -
Athletics	\$ -
Sales & Services of Ed. Depts.	\$ 81.46
Other Revenue	\$ -
Other Additions	\$ -
Total Educational & General	\$ 16,157.71
Auxiliary Enterprises	\$ 1,074.45
Gifts	\$ 0.03
Investment Income	\$ 172.22
Capital Appropriations	\$ -
Private Gifts & Contracts	\$ -
Total Revenues & Additions	\$ 17,404.41

**Troy University
Dothan Campus
Unrestricted and Restricted Current Funds
Expenditures by Function (in thousands)
For the Years Ended September 30, 2005**

Function	2005
Instruction	\$ 6,652.72
Research	\$ 11.84
Public Service	\$ 346.69
Academic Support	\$ 829.79
Athletics	\$ -
Libraries	\$ 540.58
Student Services	\$ 853.48
Institutional Support	\$ 1,724.69
Op. & Maint. Of Plant	\$ 1,052.44
Depreciation	\$ 508.28
Scholarship	\$ 1,221.14
Total Ed. & Gen. Expenses	\$ 13,741.65
Interest Expense	\$ 410.96
Transfers to Unexpended Plant	\$ 2,151.13
Mandatory Transfers	\$ -
Nonmandatory Transfers	\$ -
Total Educational & General	\$ 16,303.74
Auxiliary Enterprises (net)	\$ 1,120.48
Mandatory Transfers	\$ -
Nonmandatory Transfers	\$ -
Total Expenditures & Transfers	\$ 17,424.22

Source: Office of Accounting Services

* Note: Government Accounting Standards Board (GASB) requirements were implemented in FY 2002

Function	2005
Instruction	38.18%
Research	0.07%
Public Service	1.99%
Academic Support	4.76%
Athletics	0.00%
Libraries	3.10%
Student Services	4.90%



Troy University
Dothan Campus
Unrestricted and Restricted Current Funds
Expenditures per FTE Student
For the Years Ended September 30, 2005

Function	2005
(FTE)	(1,417)
Instruction	\$ 4,695
Research	\$ 8
Public Service	\$ 245
Academic Support	\$ 586
Athletics	\$ -
Libraries	\$ 381
Student Services	\$ 602
Institutional Support	\$ 1,217
Op. & Maint. Of Plant	\$ 743
Depreciation	\$ 359
Scholarship	\$ 862
Total Ed. & Gen. Expenses	\$ 9,698
Interest Expense	\$ 290
Transfers to Unexpended Plant	\$ 1,518
Mandatory Transfers	\$ -
Nonmandatory Transfers	\$ -
Total Educational & General	\$ 11,506
Auxiliary Enterprises (net)	\$ 791
Mandatory Transfers	\$ -
Nonmandatory Transfers	\$ -
Total Expenditures & Transfers	\$ 12,297

Source: Office of Accounting Services

*Note: Government Accounting Standards Board (GASB) requirements were implemented in FY 2002.

The SACS method was used for FTE calculations.

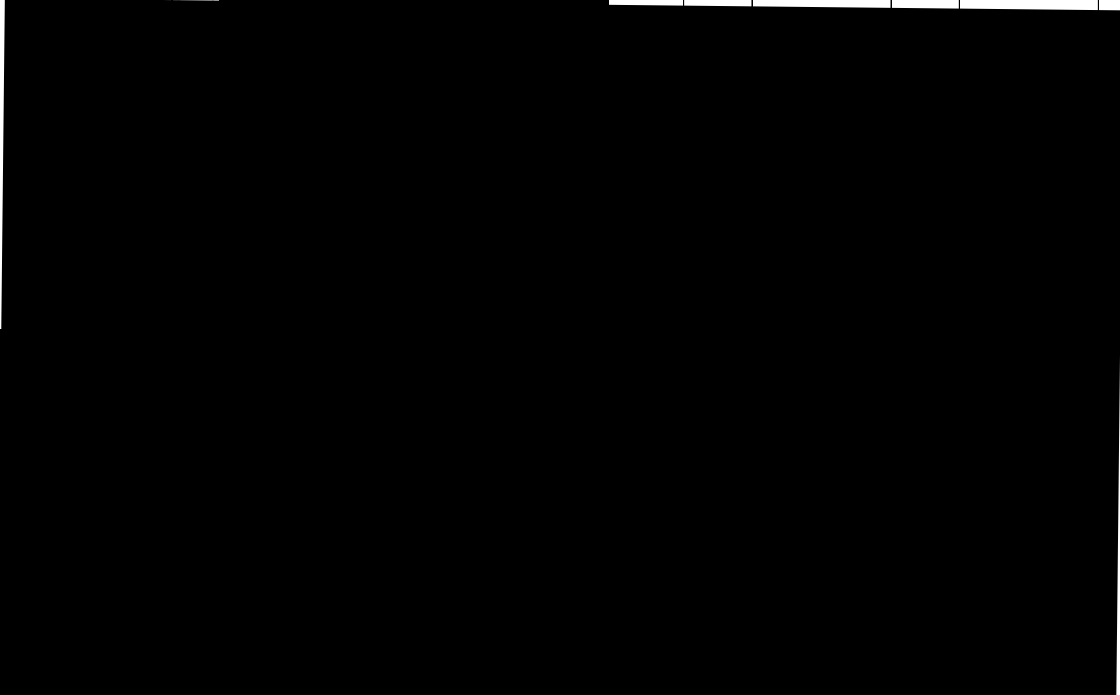


Montgomery Campus Appendix

**Montgomery Campus*
Quick Facts
Fall Semester 2005**

1. He
Total
2. Fu
3. He
4. He
5. He

Course		SACS FTE	ACHE FTE		Total		Total		Total	
Total		2,909	2,520		4,257		4,257		100%	
Full-time Undergraduates		2,436	57%		Total		Part-time Graduates		Total	
Total		2,436	57%		201		5%		395	
Freshman		1,001	19%		43		1%		596	
Sophomore		554	13%		802		19%		4,257	
Junior		554	13%		802		19%		4,257	
Senior		554	13%		802		19%		4,257	
Total		4,257	100%		4,257		100%		4,257	
Female		3,111	73%		4,257		100%		4,257	
Hispanic		39	0.9%		1,566		36.8%		72	
Caucasian		1,566	36.8%		72		1.7%		4,257	
Ethnicity Unknown		72	1.7%		4,257		100%		4,257	



University Graduates										
6. Degrees Conferred - 2004-2005										
	Associate's		Bachelor's		Master's		Education Specialist		Total	
Total	86	12%	323	46%	284	41%	3	0%	696	100%
7. Number of Alumni:										
		14,583								
University Personnel										
8. Full-time Instructional Faculty										
Total	50									
9. Full-time Tenured Instructional Faculty										
Total	24									
10. Employee Analysis										
	Full-time Employees		Part-time Employees		Total Employees					
Total	169	37%	283	63%	452	100%				

**Montgomery Campus
Summary of Headcount Enrollment
Fall 2001 through Fall 2005**

Terms

Undergraduate

Graduate

Total

**Montgomery Campus
Headcount Enrollment by Student Age Group,
Enrollment Status, and Academic Level
Fall 2005**

Age Group	Full-Time		Part-Time		Total		Total %	
	Undergraduate	Graduate	Undergraduate	Graduate	Undergraduate	Graduate	Undergraduate	Graduate
Under 18	0	0	0	0	0	0	0.00%	0.00%
18-19	89	0	89	0	178	0	4.86%	0.00%
20-21	168	0	213	0	381	0	10.41%	0.00%

**Montgomery Campus
Fall Headcount Enrollment Comparison
By Ethnicity, Gender, and Academic Level
Fall 2001 through Fall 2005**

Ethnicity/Academic Level	Fall 2001			Fall 2002			Fall 2003			Fall 2004			Fall 2005		
	Male	Female	Total	Male	Female	Total	Male	Female	Total	Male	Female	Total	Male	Female	Total
<u>Non-Resident Alien</u>															
Undergraduate	0	0	0	0	0	0	0	0	0	0	0	0	2	1	3
Graduate	0	0	0	0	0	0	0	0	0	0	0	0	0	1	1
Total	0	0	0	0	0	0	0	0	0	0	0	0	2	2	4
<u>African American</u>															
Undergraduate	302	852	1,154	296	958	1,254	360	1,275	1,635	422	1,601	2,023	407	1,710	2,117
Graduate	47	156	203	48	177	225	65	256	321	95	303	398	73	329	402
Total	349	1,008	1,357	344	1,135	1,479	425	1,531	1,956	517	1,904	2,421	480	2,039	2,519
<u>American Indian</u>															
Undergraduate	3	5	8	6	6	12	2	6	8	2	5	7	2	8	10
Graduate	1	1	2	1	1	2	0	1	1	1	0	1	0	1	1
Total	4	6	10	7	7	14	2	7	9	3	5	8	2	9	11
<u>Asian/Pacific Islander</u>															

Montgomery Campus*

Headcount Enrollment by College and Academic Level

Fall 2005

Fall 2005

Montgomery Campus
Permanent Residence By Alabama Counties
Fall 2005

Autauga	396	Coosa	3	Jefferson	44	Pike	38
---------	-----	-------	---	-----------	----	------	----

Alabama

**Montgomery Campus
Headcount Enrollment
By Foreign Countries
Fall 2005**

India	1	Saudi Arabia	1
Morocco	1	South Korea	1
		TOTAL	4

Source: Office of Institutional Research, Planning, and Effectiveness

**Montgomery Campus
Course Enrollment
By Term and Academic Level
2000-2001 through Fall 2005**

Term/Year	Number of Students			% of Total Students		
	Undergraduate	Graduate	Total	Undergraduate	Graduate	Total
Fall 2000	7,399	1,424	8,823	83.86%	16.14%	100.00%
Spring 2001	7,635	953	8,588	88.90%	11.10%	100.00%
Summer 2001	3,507					

**Montgomery Campus
Credit Hour Production
By Term and Academic Level
2000-2001 through Fall 2005**

Term/Year	Lower Division	Number of Credit Hours			% of Total Credit Hours
		Upper Division	Total	Undergraduate	

D

**Montgomery Campus
ACHE Full-Time Equivalency (Student FTE)*
By Term and Academic Level
2000-2001 through Fall 2005**

Term/Year	Lower	FTE	% of FTE
------------------	--------------	------------	-----------------

MONTGOMERY CAMPUS
 APPLICATIONS RECEIVED, ACCEPTED, AND ENROLLED
 FALL 2005

	FALL 2005		
	Male	Female	TOTAL
APPLICATIONS RECEIVED			
Freshmen	211	497	708
Transfers	335	784	1,119
First-Time Graduates	83	273	356
TOTAL	629	1,554	2,183
ACCEPTED			
Freshmen	185	465	650
Transfers	317	717	1,034
First-Time Graduates	77	261	338
TOTAL	579	1,443	2,022
ENROLLED			
Freshmen	117	293	410
Transfers	157	350	507
First-Time Graduates	45	154	199
TOTAL	319	797	1,116

MONTGOMERY CAMPUS
ACT NORMS
ENROLLED FIRST-TIME FIRST-YEAR FRESHMEN

□

Fall	English	Math	Reading	Science Reasoning	Composit
------	---------	------	---------	-------------------	----------

ACT CLASS PROFILE REPORT

FRESHMAN CLASS 2005 - 2006

TROY UNIVERSITY
TROY, AL

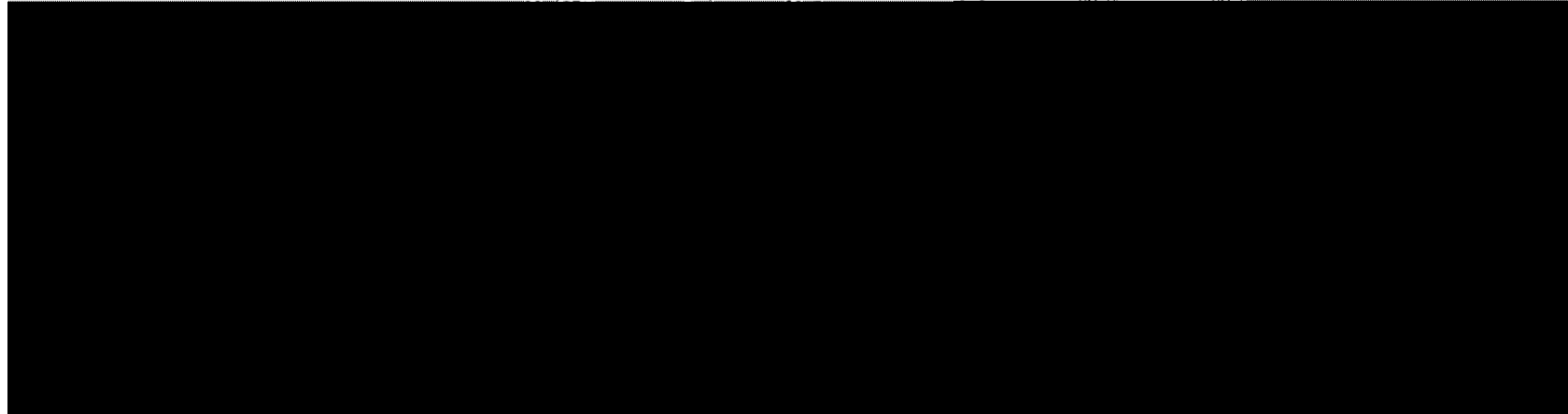
Code 0133

Summary of ACT Score Averages and Standard Deviations:

2004-2005 Norms				Total Received		Participated		Non-Participated							
National		Mtn. State		Score		Avg. S.D.		Avg. S.D.		Avg. S.D.		Avg. S.D.			
Avg.	S.D.	Avg.	S.D.	Avg.	S.D.	Avg.	S.D.	Avg.	S.D.	Avg.	S.D.	Avg.	S.D.		
21.3	5.6	21.2	5.3	English	17.5	4.6	16.5	3.8	17.8	4.7	--	--	--	--	
[REDACTED]															
Arts/Literature				8.8	3.3	8.1	2.8	8.9	3.3	--	--	--	--	11.4	3.7
Science				18.0	3.5	17.2	2.7	18.1	3.6	--	--	--	--	21.5	4.5
Composite				17.7	3.4	16.7	2.4	17.8	3.5	--	--	--	--	21.7	4.7

ACT Quartile Values:

17.6	English Q1 (25th percentile)	14.6	14.2	14.7	17.4
20.0	Q2 (median)	17.4	15.8	17.6	20.0



**MONTGOMERY CAMPUS
GRADUATION RATES
STUDENT BODY AND STUDENT ATHLETES
FRESHMEN ENTERING FALL 1995 THROUGH FALL 1999**

The Federal Student-Right-To-Know law requires that institutions assess and report student retention and completion rates to the public. Monitoring retention and completion rates over time can help assess the effectiveness of both academic and student life programs as well as innovative programs such as the first year experience program aimed at increasing freshmen retention. The graduation rate as established by the United States Department of Education to meet current Student-Right-To-Know requirements calls for the Cohort group to be those first-time, full-time freshmen students who enrolled at the University during Summer or Fall six years prior to the reporting year and graduated before Fall of the reporting year.

Report for 2002 (Cohort Graduates through Summer 2001)

FALL 1995 COHORT

TOTAL OVERALL GRADUATION RATE FOR ALL STUDENTS: NA
TOTAL OVERALL GRADUATION RATE FOR ATHLETES: NA

Report for 2003 (Cohort Graduates through Summer 2002)

FALL 1996 COHORT

TOTAL OVERALL GRADUATION RATE FOR ALL STUDENTS: 9%
TOTAL OVERALL GRADUATION RATE FOR ATHLETES: NA

Report for 2004 (Cohort Graduates through Summer 2003)

FALL 1997 COHORT

TOTAL OVERALL GRADUATION RATE FOR ALL STUDENTS: 10%
TOTAL OVERALL GRADUATION RATE FOR ATHLETES: NA

Report for 2005 (Cohort Graduates through Summer 2004)

FALL 1998 COHORT

TOTAL OVERALL GRADUATION RATE FOR ALL STUDENTS: 11%
TOTAL OVERALL GRADUATION RATE FOR ATHLETES: NA

Report for 2006 (Cohort Graduates through Summer 2005)

FALL 1999 COHORT

TOTAL OVERALL GRADUATION RATE FOR ALL STUDENTS: 12%
TOTAL OVERALL GRADUATION RATE FOR ATHLETES: NA%

SOURCE: Office of Institutional Research, Planning, & Effectiveness

Montgomery Campus
Degrees Conferred by Academic Prog

**Montgomery Campus
Degrees Conferred by College
2000-01 through 2004-2005***

Year & College	Associate	Bachelor's	Master's	Educational Specialist	Total
2000-2001					
Arts & Sciences	48	77	10	0	135
Business	17	167	100	0	284
Communication & Fine Arts	0	0	0	0	0
Education	0	44	81	3	128
Health & Human Services					0
Total	65	288	191	3	547
2001-2002					
Arts & Sciences	71	78	5	0	154
Business	11	160	96	0	267
Communication & Fine Arts	0	0	0	0	0
Education	0	45	73	4	122
Health & Human Services	0	0	0	0	0
Total	82	283	174	4	543
2002-2003					
Arts & Sciences	68	79	6	0	153
Business	14	192	110	0	316
Communication & Fine Arts	0	0	0	0	0
Education	0	53	66	2	121
Health & Human Services	0	0	0	0	0
Total	82	324	182	2	590
2003-2004					
Arts & Sciences	59	88	17	0	164
Business	14	178	126	0	318
Communication & Fine Arts	0	0	0	0	0
Education	0	36	66	3	105
Health & Human Services	0	0	0	0	0
Total	73	302	209	3	587
2004-2005					
Arts & Sciences	78	74	43	0	195
Business	7	210	154	0	371
Communication & Fine Arts	0	0	0	0	0
Education	1	39	87	3	130
Health & Human Services	0	0	0	0	0
Total	86	323	284	3	696

* Note: The degrees reported were awarded between July 1, 2004 and June 30, 2005.

**Montgomery Campus
Summary of Full-Time Faculty Salaries by Rank and Gender
Fall 2005**

RANK	9-10 Month				11-12 Month			
	Number		Average Salary		Number		Average Salary	
	Men	Women	Men	Women	Men	Women	Men	Women
Professor	3	1	\$69,901	\$57,200	7	1	\$84,042	\$72,072
Associate Professor	1	3	\$68,796	\$47,999	4	1	\$70,909	\$57,658
Assistant Professor	6	5	\$55,137	\$49,958	8	2	\$58,442	\$50,112
Instructor	2	0	\$54,080	\$0	0	2	\$0	\$37,440
Lecturer	0	1	\$0	\$60,000	1	1	\$40,000	\$40,000
Undesignated	0	0	\$0	\$0	0	0	\$0	\$0
Total	12	10	\$59,790	\$51,099	20	7	\$68,973	\$49,262

Source: Office of Institutional Research, Planning and Effectiveness

Source	2005	
Tuition and Fees	\$	13,980.52
State Appropriations	\$	6,893.17
Federal Grants & Contracts	\$	6,963.71

[Redacted]

[Redacted]

[Redacted]

[Redacted]

[Redacted]

[Redacted]

Function	2005
Instruction	27.94%
Research	0.00%
Public Service	2.99%
Academic Support	5.59%
Athletics	0.00%
Libraries	0.93%
Student Services	4.14%
Institutional Support	12.20%
Op. & Maint. Of Plant	6.21%



Montgomery Campus Financial Aid Annual Report

Troy University	2001-2002		2002-2003		2003-2004		2004-2005	
Type	Awards	Disbursed	Awards	Disbursed	Awards	Disbursed	Awards	Disbursed
Pell	1,261	\$2,507,056	1,561	\$3,390,473	2,066	\$4,609,371	2,623	\$5,960,696
SEOG	31	\$49,000	71	\$76,000	26	\$49,000	39	\$70,000
Perkins Loans	0	\$0	0	\$0	0	\$0	15	\$42,000
Work Study	45	\$35,353	45	\$35,096	39	\$31,725	45	\$39,002
Workshop								
PLUS Loans	18	\$51,351	19	\$61,807	41	\$91,893	87	\$73,020
Stafford Loans	2,178	\$5,501,258	2,921	\$8,334,072	6,124	\$16,568,486	7,944	\$23,928,672
Private Loans	6	\$27,565	7	\$25,726	5	\$18,885	24	\$92,584
FL/AL State Grants	4	\$8,000	10	\$8,000	14	\$21,500	2	\$2,000
University Scholarships and Grants	0	\$0	0	\$0	0	\$0	0	\$0
University Athlete Scholarships and Grants	0	\$0	0	\$0	0	\$0	0	\$0
University Non-Athlete Grant in Aid	0	\$0	0	\$0	0	\$0	0	\$0
Other Scholarships	249	\$773,231	66	\$106,755	255	\$597,616	263	\$661,756
Employee Benefits	0	\$0	0	\$0	28	\$36,777	13	\$19,478
Veterans Benefits	592	\$2,288,202	630	\$2,473,176	641	\$2,781,394	620	\$4,125,936
Total	4,384	\$11,241,015	5,330	\$14,511,105	9,239	\$24,806,646	11,675	\$35,015,144
Average Borrower Indebtedness								
							Undergrad	Grad
Troy campus							\$14,439	\$21,381
Troy University							\$14,762	\$21,035
National Median 4 year public from 2002							\$16,500	\$23,700
National Average from 2002							\$18,900	\$31,700
Default Rates								
	Perkins	Stafford	Perkins	Stafford	Perkins	Stafford	Perkins	Stafford
Troy, Phenix City, & University College	28.74%	6.00%	23.26%	4.30%	21.74%	Due 10/1/06	30.77%	Due 10/1/07
Montgomery Campus	n/a	4.90%	n/a	6.10%	n/a	Due 10/1/06	n/a	Due 10/1/07
Dothan Campus	n/a	5.60%	n/a	4.40%	n/a	Due 10/1/06	n/a	Due 10/1/07
National Average	9.51%	5.20%	8.85%	4.50%	8.30%	Due 10/1/06	Due 05/1/06	Due 10/1/07
Student Satisfaction (Top 2 of 5 choices)								
Troy campus	51.00%		52.00%		58.00%		65.00%	
Montgomery Campus	91.00%		87.00%		62.00%		0.00%	
Dothan Campus	59.00%		57.00%		66.00%		71.00%	
University College	65.00%		68.00%		84.30%		0.00%	
Troy University	66.50%		66.00%		67.58%		0.00%	

The Troy Campus office of financial aid has always completed the Federal Fiscal Operations Report on expenditures and Application for renewal funding for all campuses.

Other Scholarships increased in 03/04 due to improved communication with A/R.

Pell Maximum: \$3,750 \$4,000 \$4,050 \$4,050

Troy University

User's Comment Form

Return to: Institutional Research, Planning, and Effectiveness
231 Adams Administration Building
Troy, AL 36082

Send comments via email to: acroling@troy.edu