

Piano



mf

D⁷ma⁹(6) E⁷b⁹ C#E⁷/F F#m¹¹



37

B^bE⁺9 G< ..11 C7[^bA] D^bma9(6) G^b%(#11)

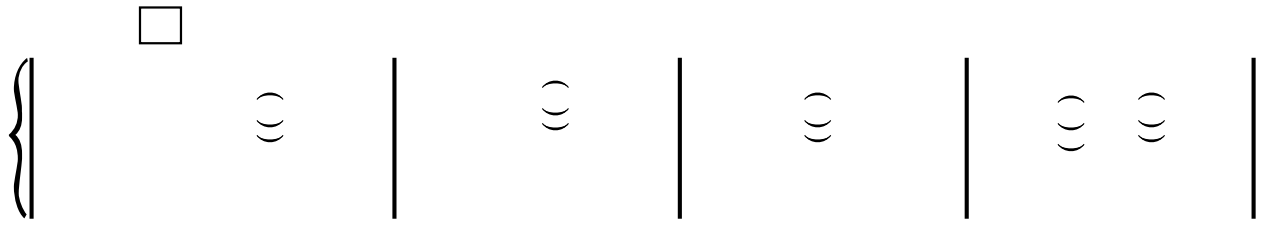
mf

41

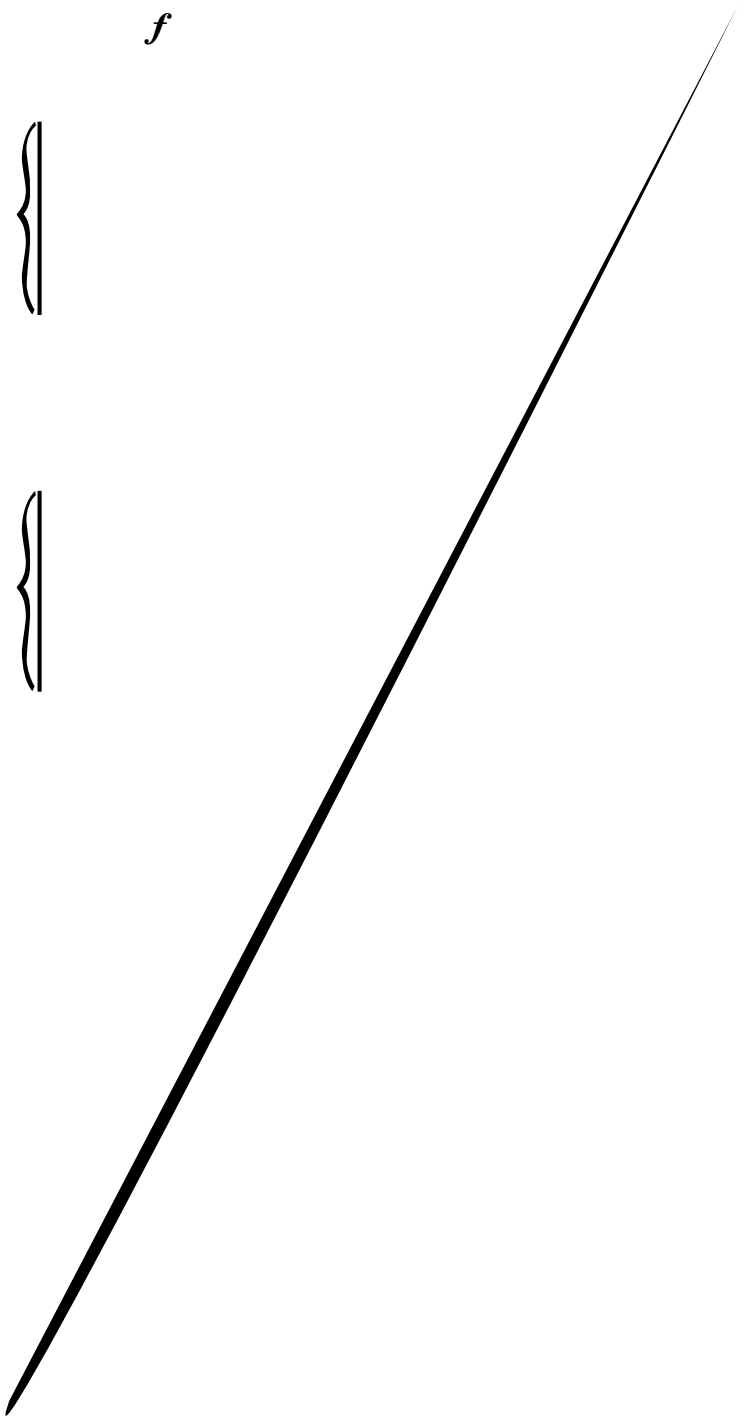
Gmi7(4) F(" 2)/A B^bE⁺9 Csus D^b%(#11)

G^bE⁺7(b5) A^b%





f



D^{ma9(6)}

E[%]

C^{7/F}



|

|

|

|

|

|

mf



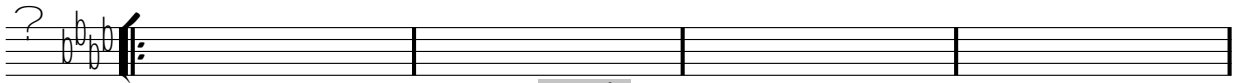
SOLOS: Backgrounds as desired

D[♭]ma9(6)

E[♭]%

C♯E7/F

F<7(♭4)

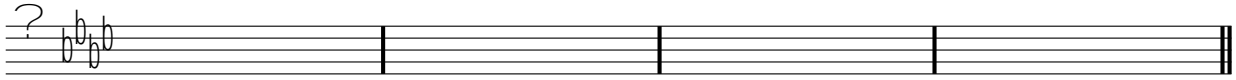


f
B[♭]♯E9

G♯E7/C

C7[♯A]

D[♭]♯E,9(♯11)



133

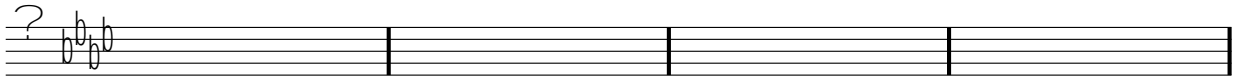
B[♭]♯E9

F♯E9

B[♭]♯E9

/C

D[♭]♯E,♯7(b5)



G[♭]♯E,♯7(b5)

A[♭]%

B[♭]♯E9

C7[♯A]

C♯E7/F

F♯E9



141

mf

G[♭]♯E,♯7(b5)

F7[♯A]



149

p

A<7(b5)

D7[♯A]



C<..11

mf

D[♭]♯E,9(♯11)

G♯E7/C

C7[♯A]



157

D[♭]ma9(6)

E[♭]%

E[♭]/F

G/F

F(2)



|

|

|

|

}

}

}

}

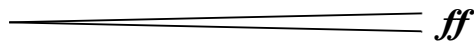


187-190



193

f



ff



A < 7(b5) D7[âA] As written C < ..11

?

mf

As written

f *f*

D(E,9(#11))

221

f

225

f *ff*

4 4

3/4 3/4

227-230

B^b E^b9

B^b Ma7/C

C7[^b9]

D^b ma9(6)

G^b % (#11)

255 *mf*

G7(E, F(b5)) A7% B7(E+9) C7[A4]

260 *mf*

264

268 *f*